

“Mandates? We don’t need no...”

BIM in Australia

Wesley Benn

RTC Events Management / UNSW / BD Group



“A gorgeous calamity in scale”

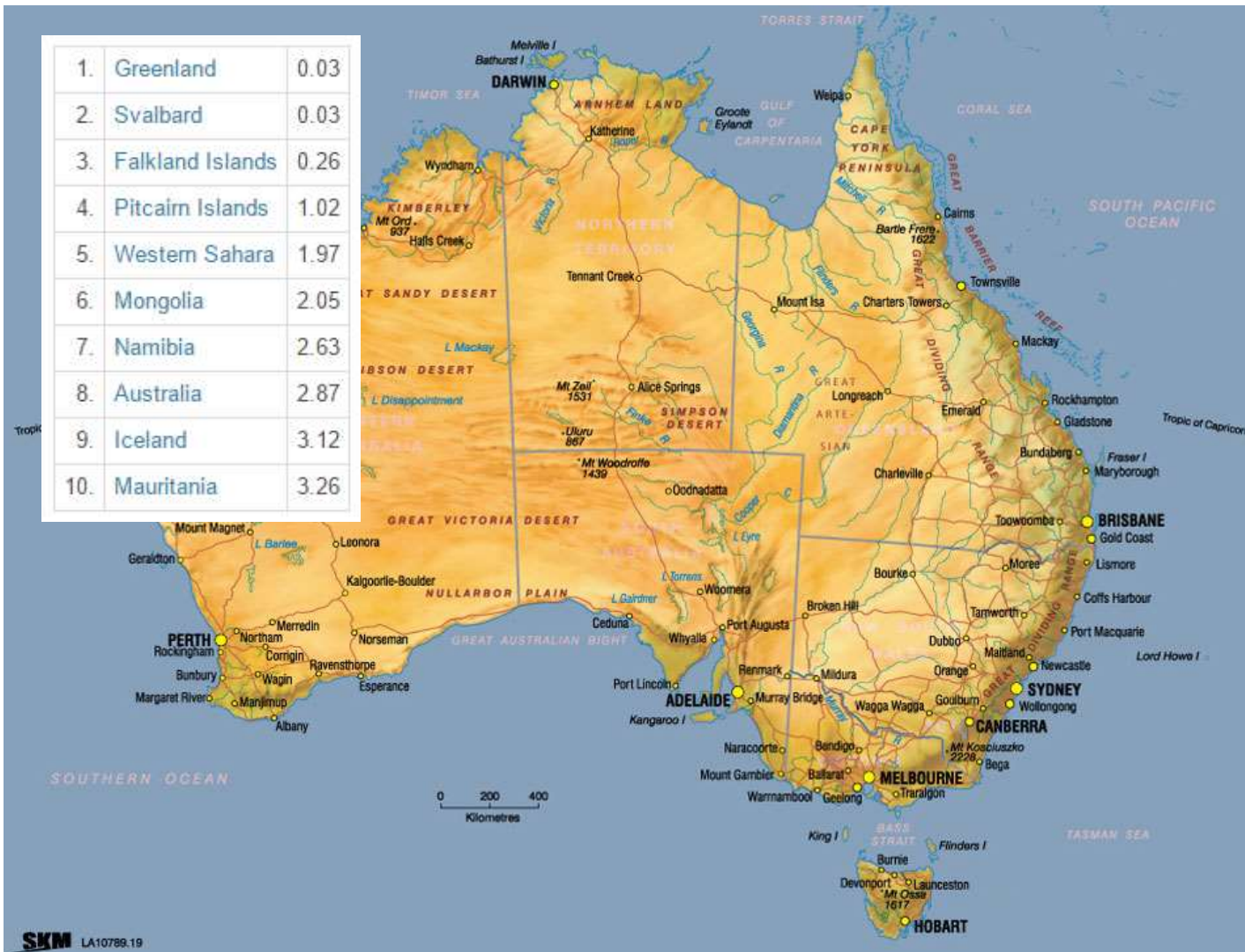
Lyndsay Faye



Australia

Landmass:
7,692,024km²

Population:
23.9 million





Denmark

Landmass:
43,094km²

Population:
5.7 million

“The Tyranny of Distance”

Geoffrey Blainey



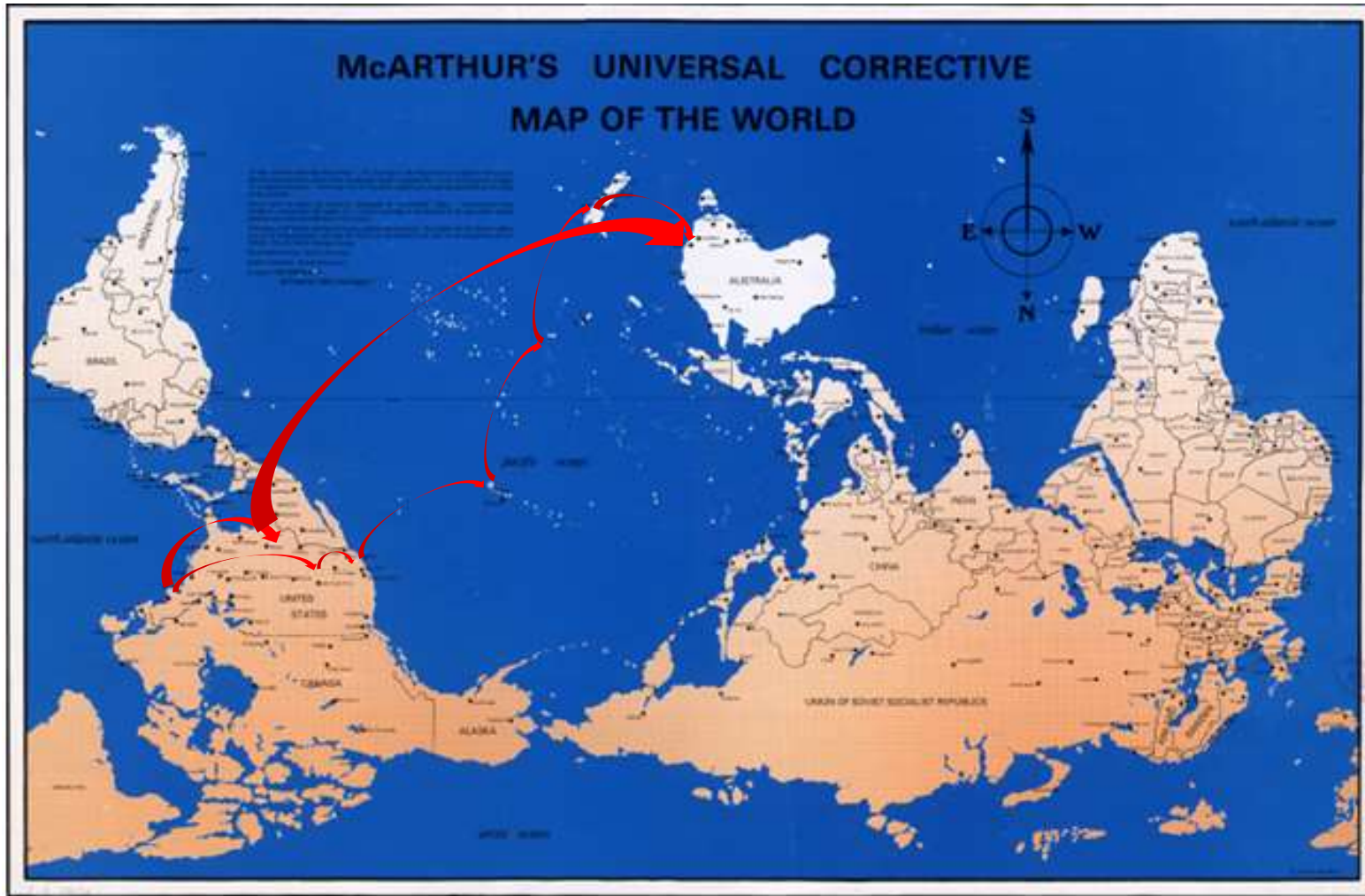


Anna Creek Station:

16,000 Cattle

19 staff

24,000km²







CARING FOR OUR COUNTRY

- Victoria
 - Department of Housing “working on a framework”
 - 2013 Government created a BIM based RFP
 - Pilot projects have commenced in 2015
- New South Wales
 - CSI has reviewed NSW BIM documentation
 - TfNSW started 3 years ago, stalled, has restarted

Victoria



New South Wales



- Queensland
 - Department of Health
 - Project Services Group
- Northern Territory
 - Ummm....
 - “looking at a mandate”

Queensland



Northern Territory



- West Australia
 - BIM briefing document developed (via PWC)
 - Applied to major infrastructure projects
 - Perth Children's Hospital
 - Resource sector
- South Australia
 - Road Map to Mandate - 2012
 -
 - Shut down in 2014

West Australia



South Australia



- Tasmania
 - BIM initiative commenced
 - Never realised
- ACT – the Australian Capital Territory
 - Seat of the Federal Government
 - And, ummm.....
 - Let's move on....
- Federal Agencies
 - Defense
 - Defense housing has been an active user of BIM, internally
 - Promised BIM based contracts in 2012, still waiting
 - Health
 - Excellent early progress
 - Centred on Queensland and South Australia
 - Has largely died out as funds disappeared for projects

Tasmania



ACT



- Prime Minister Tony Abbott
 - Avowed climate sceptic
 - Endorsed coal as the future
 - Considers windmills an ‘eyesore’
 - Removed funding to research and innovation groups
 - Reintroduced knighthoods, and knighted Prince Phillip
 - Shut the clean energy fund – which was making a profit!
 - Demoted the science ministry from a cabinet to minor position
 - And on
 - And on...
 - And on
- Traditional Industry Organisations
 - AIA / ICE
 - buildingSMART
 - BEIIC
 - NATSPEC

Federal Government



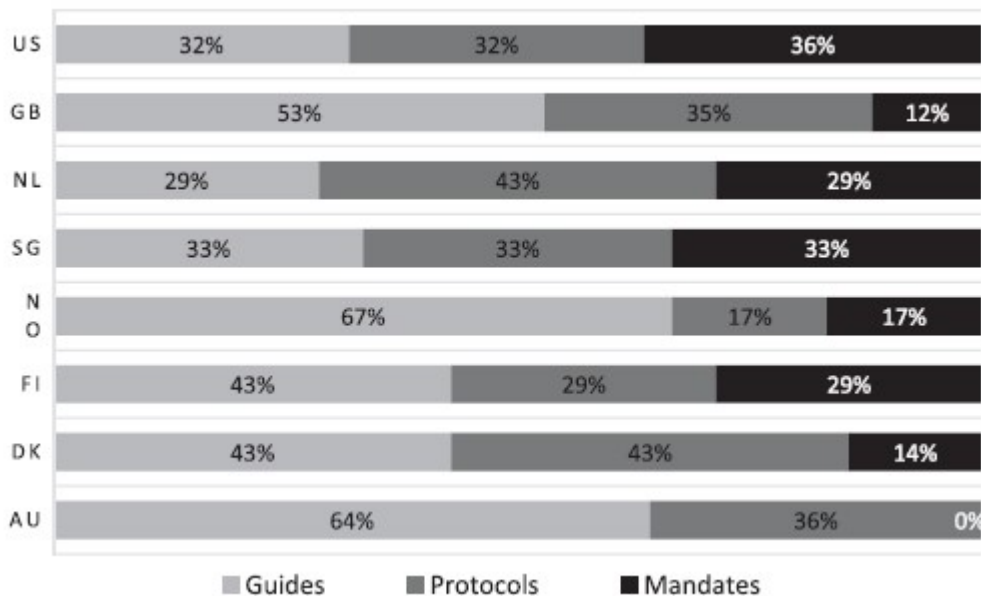
Australia



SKM LA10789.19

- New Zealand

- Government more active
- Include BIM requirements in RFP
- No longer trying to match Australia
- Have surpassed Australia
- Now following the UK model



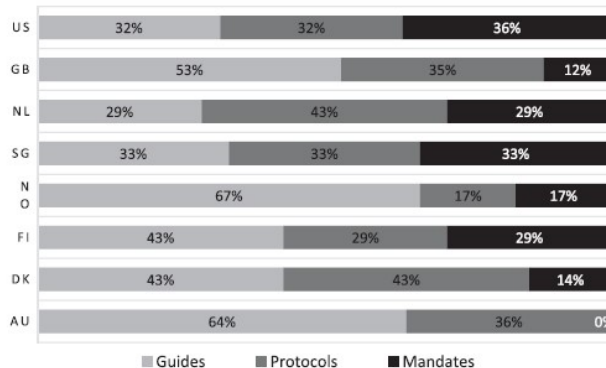
Wow!

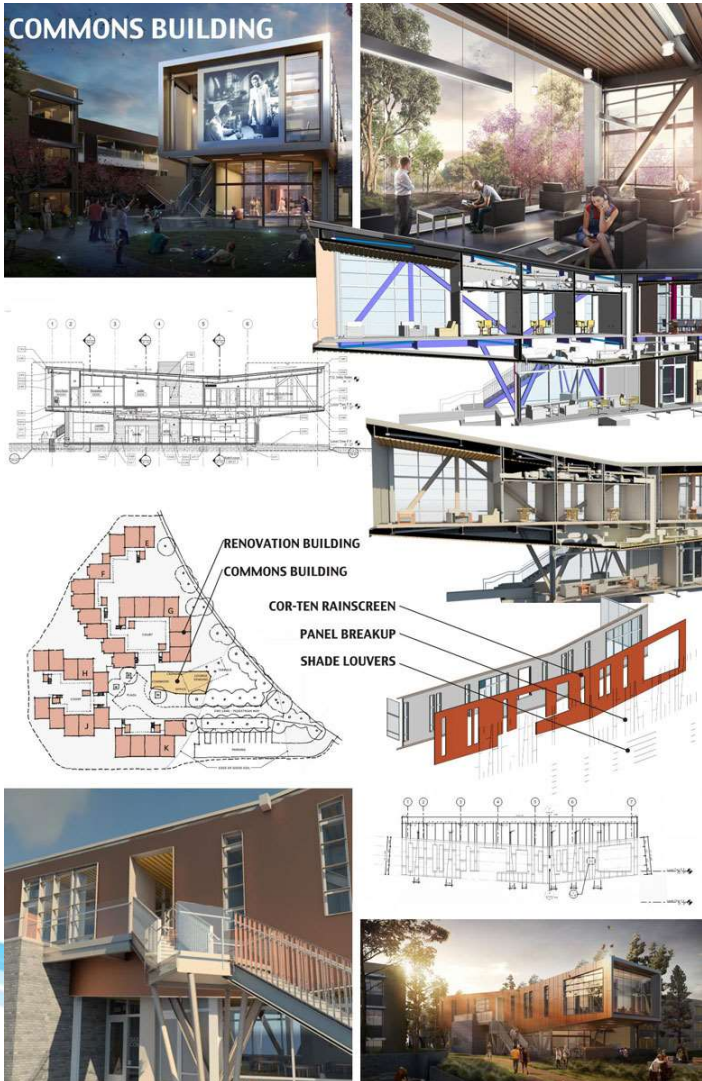


- Tony Abbott isn't our Prime Minister
 - Malcolm Turnbull, Prime Minister of Australia
 - New high-level government positions in Science, Innovation, IT
 - Reinststituted funding



- That distance thingy
 - Australia has a mindset of fierce independence
 - Everyone else is too far away to help...
 - So we build it ourselves
 - New economy associations
 - Industry derived guidelines and protocols





INTEGRATION/

This project is for the redevelopment and extension of the Faculty of Engineering (FoE) City campus buildings.

The buildings are intended to provide accommodation for the co-location of the five Engineering Departments, two of which are currently geographically spread across the City campus. This will see the Electrical & Computer Engineering and Engineering Science Departments returned to the Sector. It is envisaged that these moves will provide increased opportunity for inter-disciplinary interaction and collaboration with the potential benefit of growth in externally funded research.

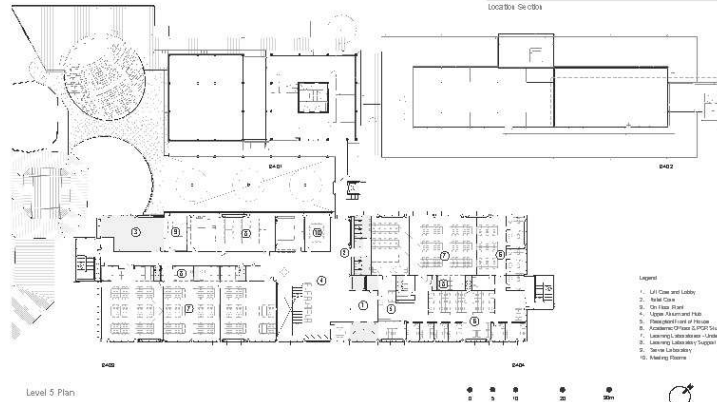
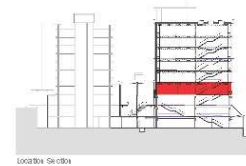
The addition to the existing building involves demolition of the current timber roof structure and construction of a new structural steel exoskeleton which wraps around the existing five level building and adds an additional five levels and plant.

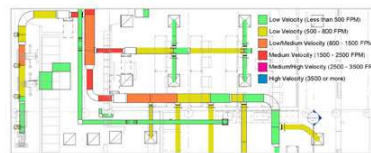
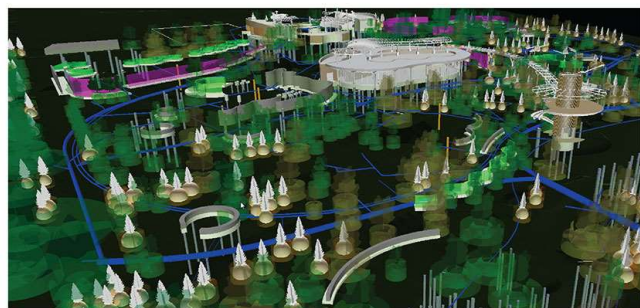
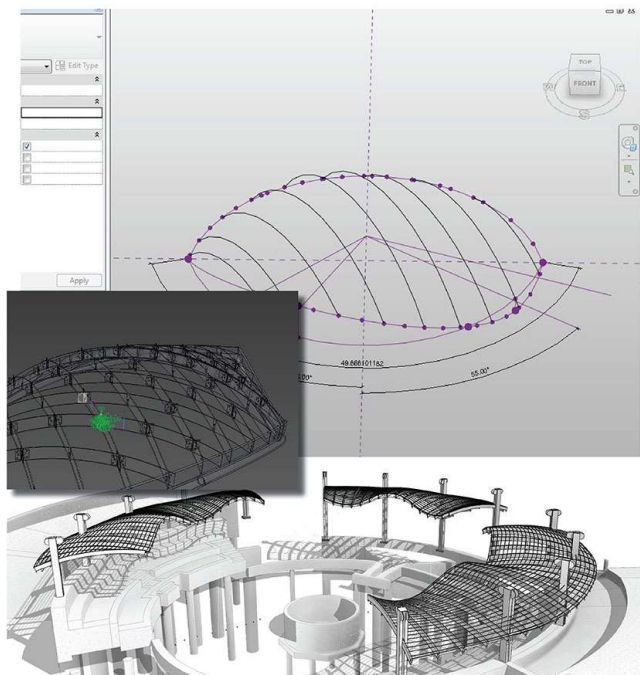
An accurate existing survey file was created in Revit Architecture and used as a base. Massing exercises within Revit Architecture were undertaken to define the scope of the building and then Sketch Up was utilised to generate design iterations for the facade which were then 'live linked' into the Primary Revit file to develop floor plans, sections and elevations.

Renderings were created with a hybrid of Revit and Sketchup geometry and post production completed in Photoshop.

All design consultants are working in Revit, and files are transferred between offices via FTP on a regular agreed basis.

As the portions of the design become confirmed, the Sketch Up Facade model is slowly being replaced with Revit geometry.

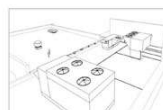




Airflow Velocity Analysis (Revit)



Lighting Analysis (ElumTools using Revit)



Design Concept

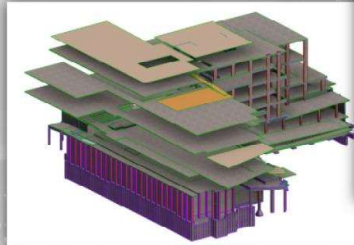


Complete Coordination

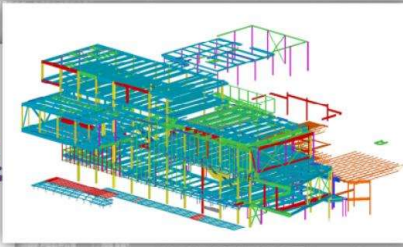


Accurate Construction

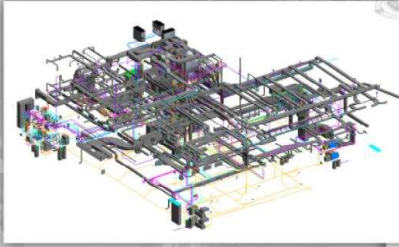
INTEGRATION REMAI ART GALLERY OF SASKATCHEWAN



REVIT STRUCTURE
CONCRETE



TEKLA STRUCTURES
STRUCTURAL STEEL



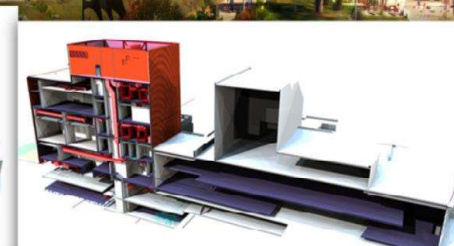
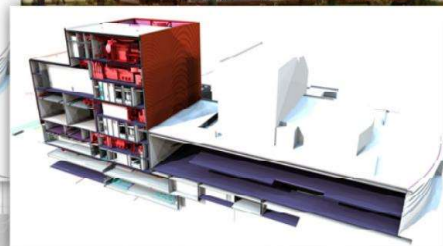
REVIT MEP
MECHANICAL



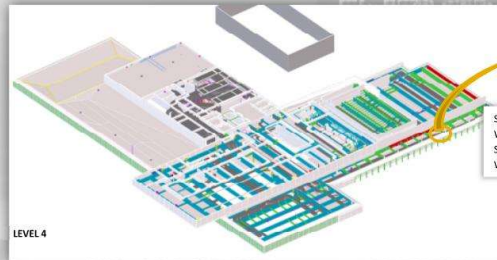
REVIT ARCHITECTURE
ARCHITECTURAL



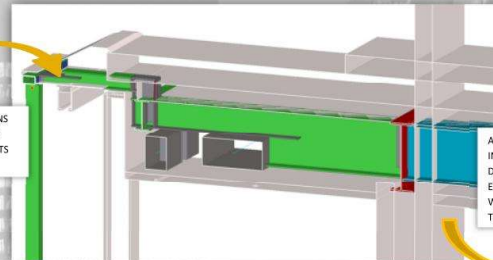
INTEGRATED MODEL SECTIONS



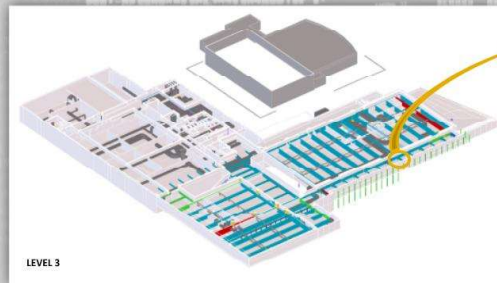
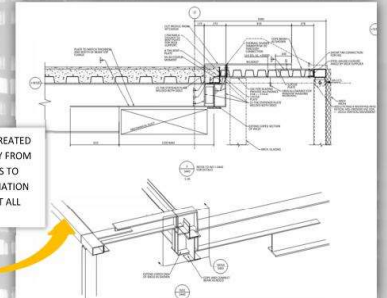
INTEGRATION REMAI ART GALLERY OF SASKATCHEWAN



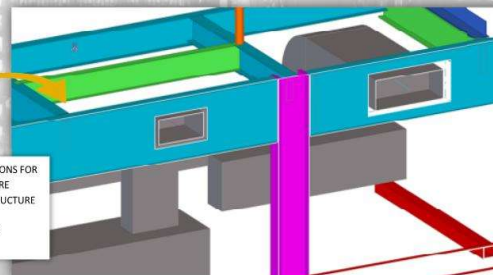
SECTIONS AND CONNECTIONS WERE DETAILED TO PRECISE SCALES TO ENSURE CONCEPTS WERE ACHIEVABLE



ALL DRAWINGS CREATED IN REVIT DIRECTLY FROM DETAILED MODELS TO ENSURE COORDINATION WAS ACHIEVED AT ALL TIMES

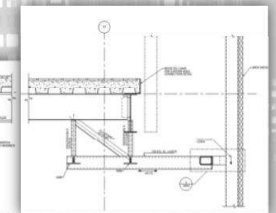
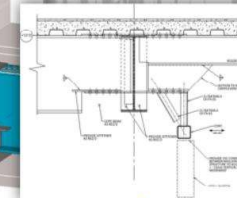


ALL REQUIRED PENETRATIONS FOR MECHANICAL SYSTEM WERE MODELED TO ENSURE STRUCTURE WAS ADEQUATE AND PENETRATIONS PROPERLY POSITIONED

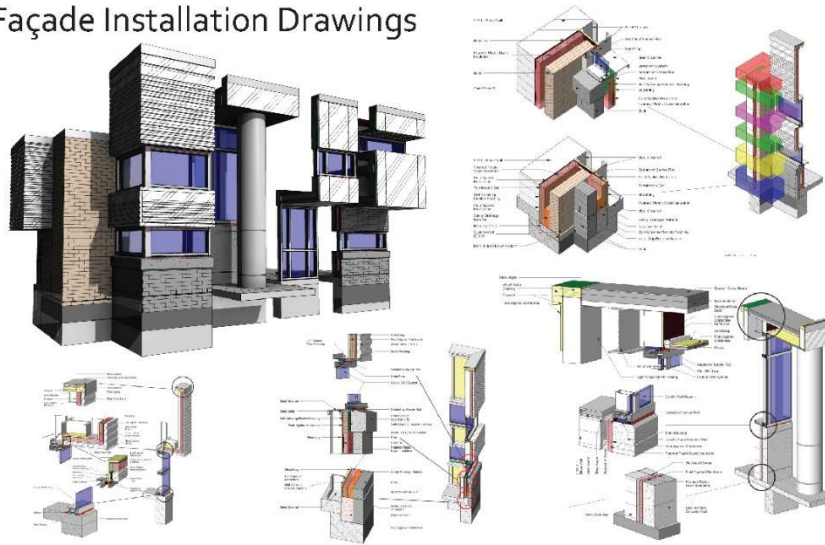


OBJECTIVES ACHIEVED:

- Fully integrated model and documents.
- Internal workflows developed to make Revit work effectively with our structural analysis software.
- The basis for steel fabrication is complete.
- Proved that Revit is capable of producing documents from other model sources with the advantage of keeping all sheets in a single Revit file.



Façade Installation Drawings



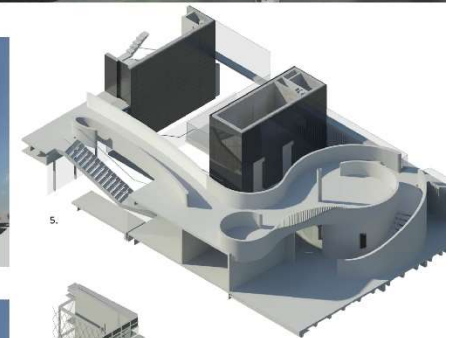
1.



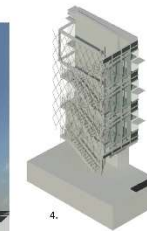
2.



3.

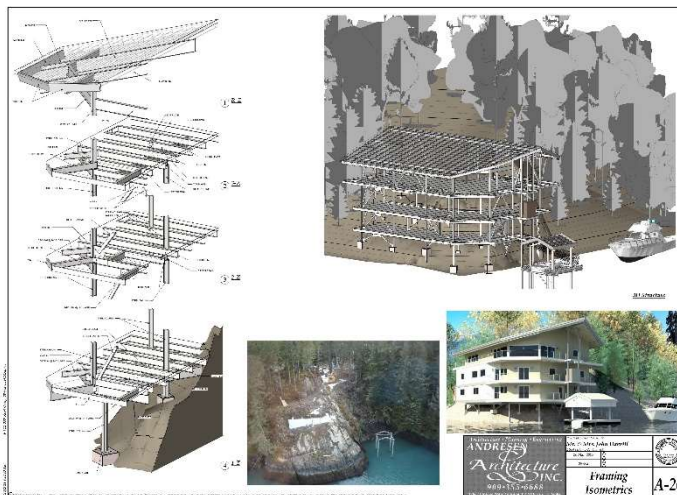


5.



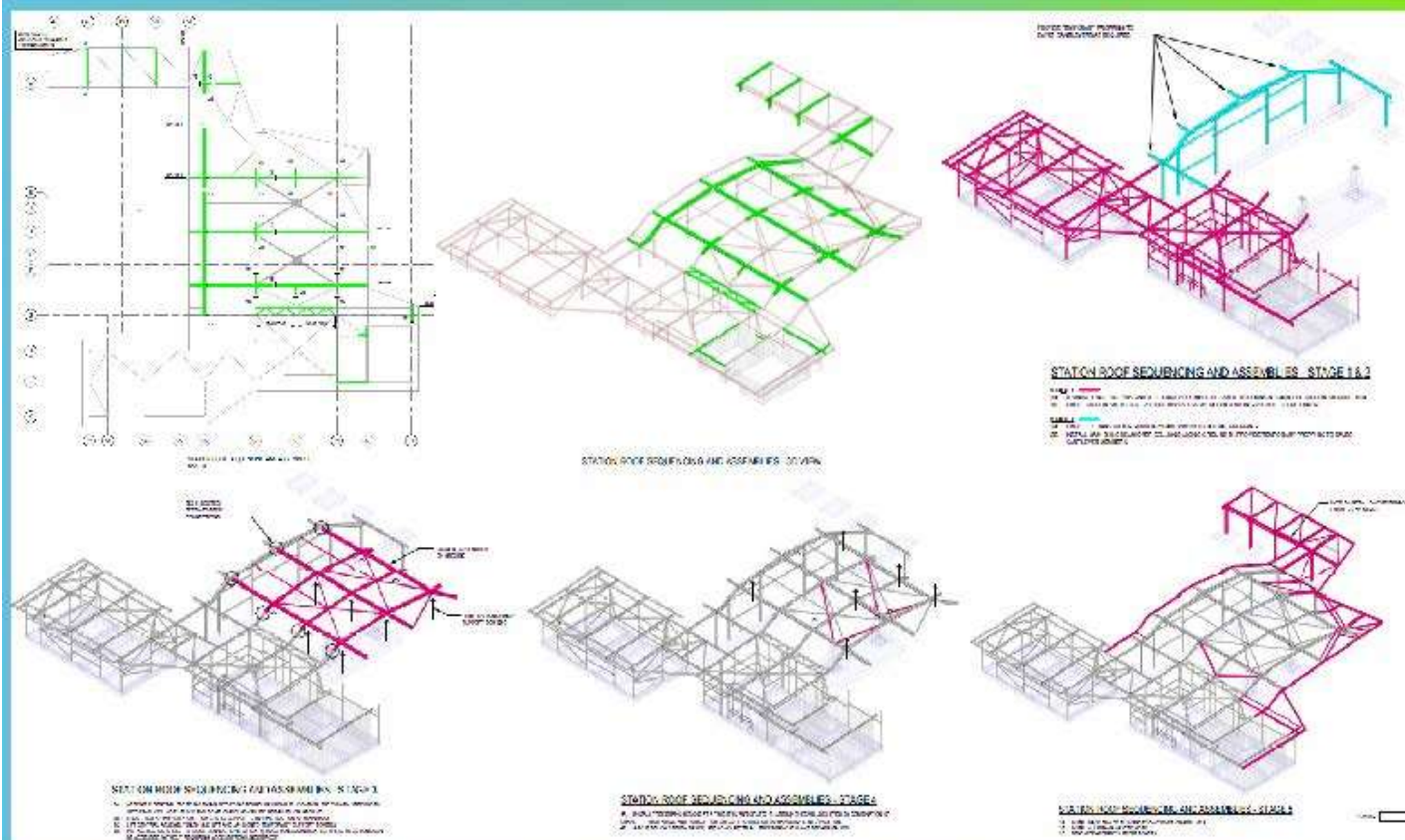
4.

Facade and Circulation Exploration:
Facade and circulation exploration (Figures 2, 3, 4 & 5)
native Revit renders. Figure 1 rendered in 3dsMax Design
using an FBX file exported from the Revit Model.

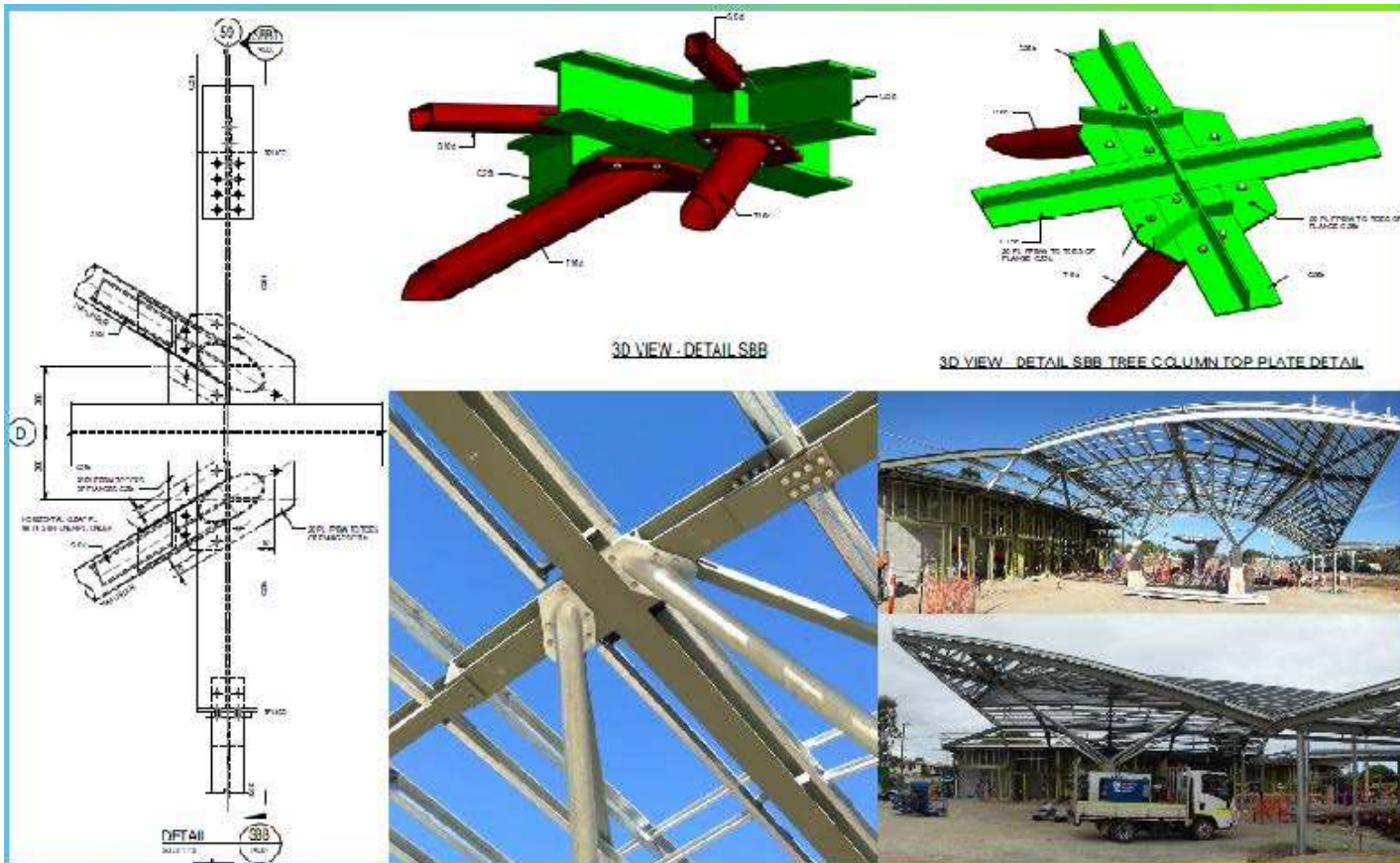




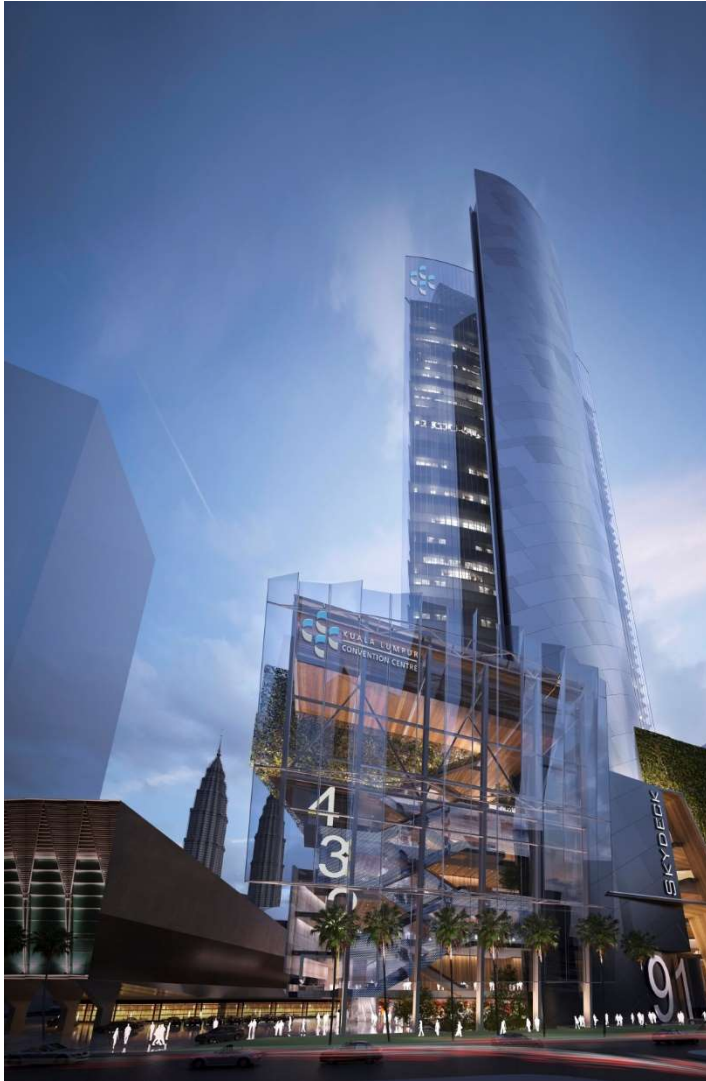
Steelwork & Concrete Quantities



Steelwork Roof Sequencing Welded Members & Bolted Members

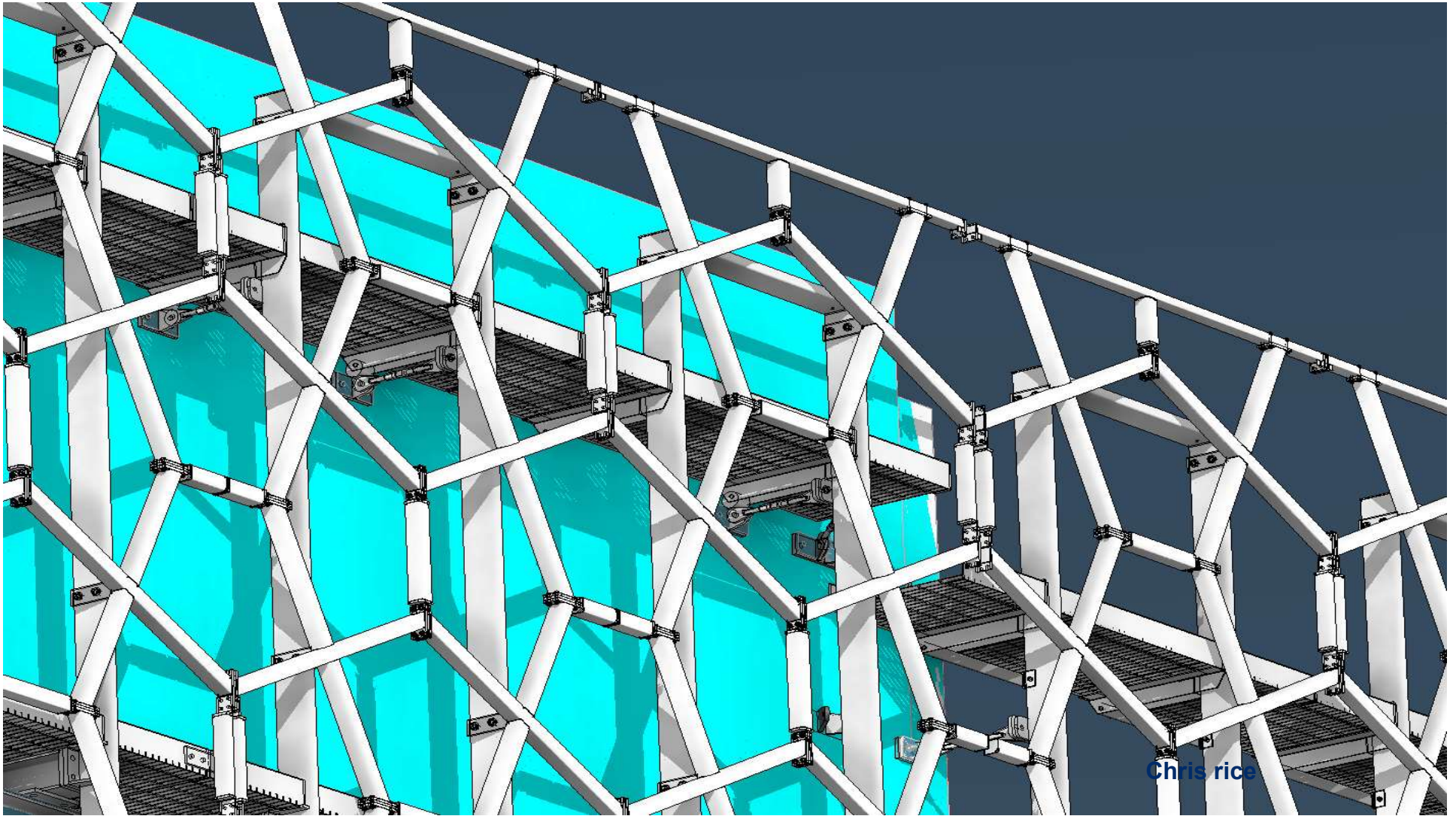


Steelwork Roof Structure Details & Site Photos

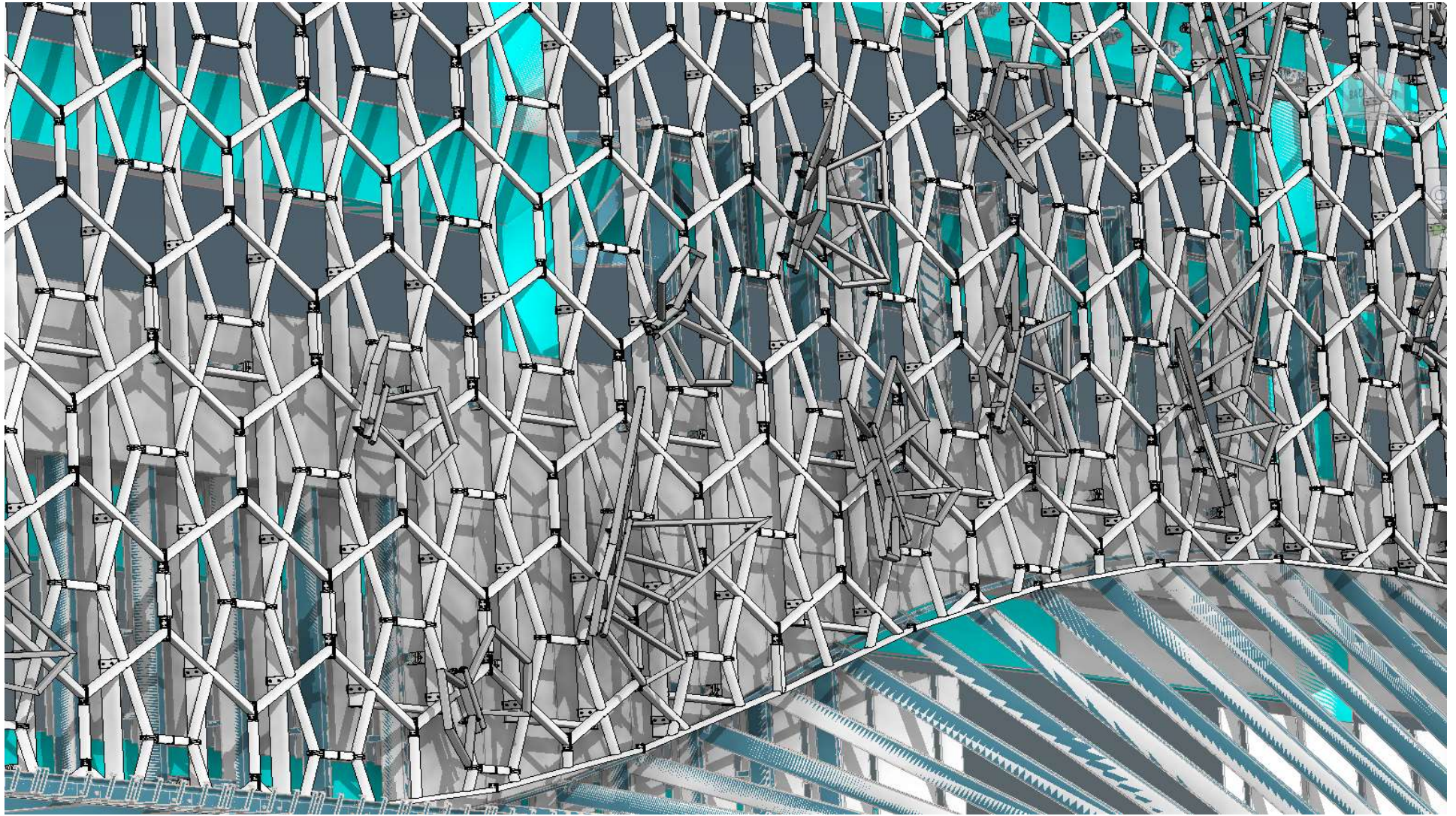


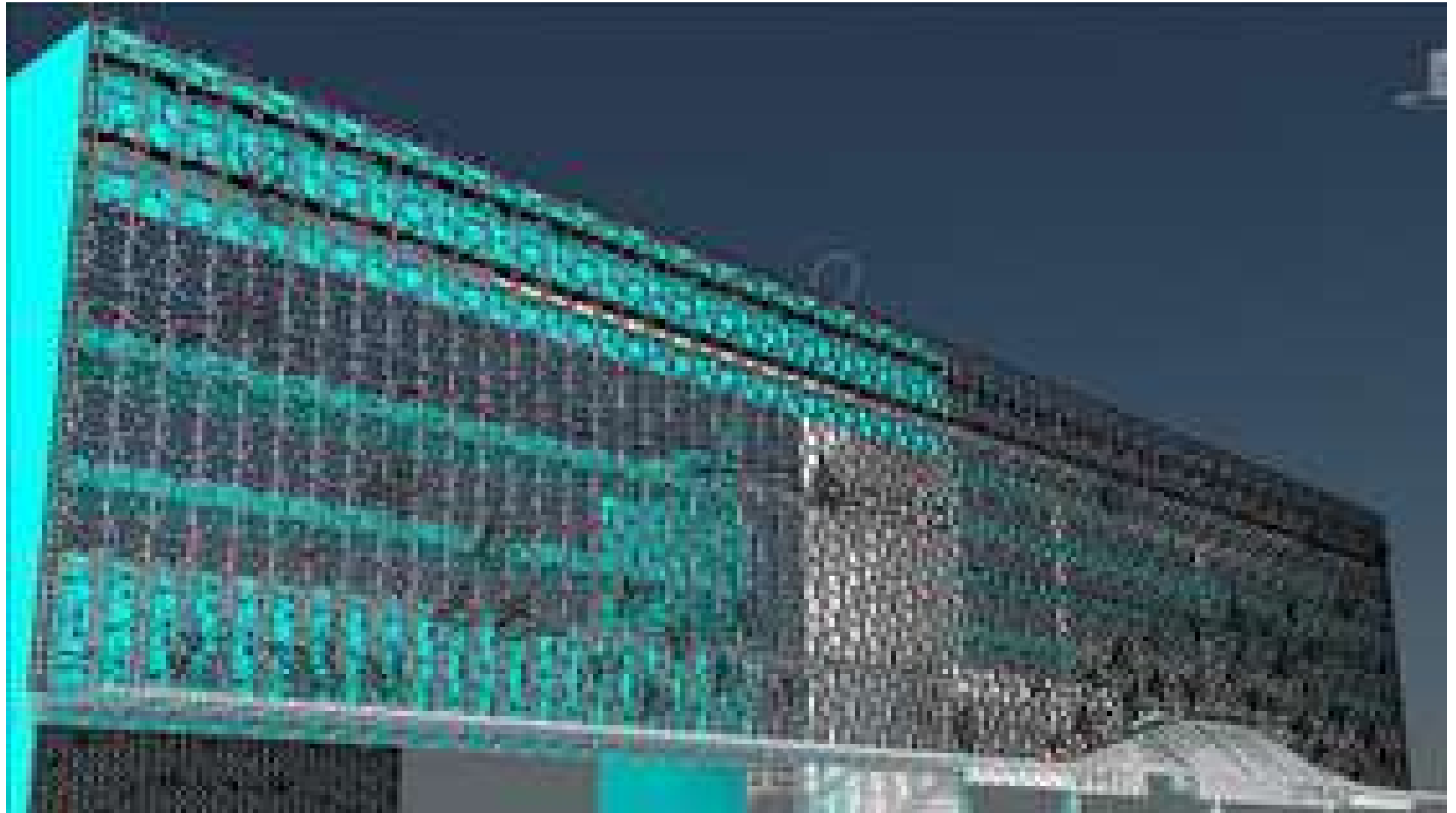






Chris rice







Port Lincoln Airport New Terminal



Level 4 211 Victoria Square Adelaide SA 5000 | T 61 8 8111 6600 | F 61 8 8111 6699 | <http://www.ghd.com.au>



Port Lincoln Airport New Terminal



Level 4 211 Victoria Square Adelaide SA 5000 | T 61 8 8111 6600 | F 61 8 8111 6699 | <http://www.ghd.com.au>



Port Lincoln Airport New Terminal



Level 4 211 Victoria Square Adelaide SA 5000 | T 61 8 8111 6600 | F 61 8 8111 6699 | <http://www.ghd.com.au>



Port Lincoln Airport New Terminal



Level 4 211 Victoria Square Adelaide SA 5000 | T 61 8 8111 6600 | F 61 8 8111 6699 | <http://www.ghd.com.au>



Port Lincoln Airport New Terminal



Level 4 211 Victoria Square Adelaide SA 5000 | T 61 8 8111 6600 | F 61 8 8111 6699 | <http://www.ghd.com.au>



Port Lincoln Airport New Terminal

Level 4 211 Victoria Square Adelaide SA 5000 | T 61 8 8111 6600 | F 61 8 8111 6699 | <http://www.ghd.com.au>





Port Lincoln Airport New Terminal



Level 4 211 Victoria Square Adelaide SA 5000 | T 61 8 8111 6600 | F 61 8 8111 6699 | <http://www.ghd.com.au>

- Tony Abbott isn't our Prime Minister
 - Malcolm Turnbull, Prime Minister of Australia
 - New high-level government positions in Science, Innovation, IT
 - Reinstigated funding

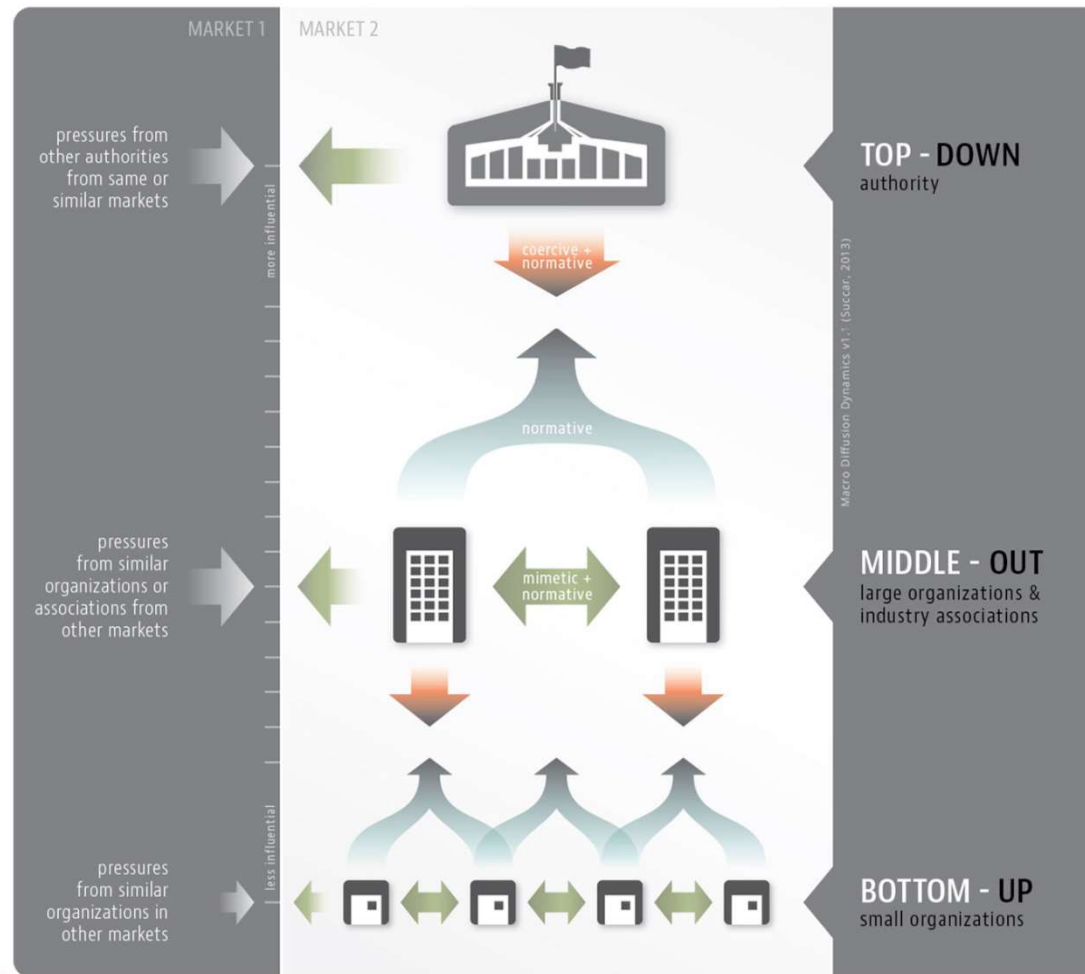


- That distance thingy
 - Australia has a mindset of fierce independence
 - Everyone else is too far away to help...
 - So we build it ourselves
 - New economy associations
 - Industry derived guidelines and protocols

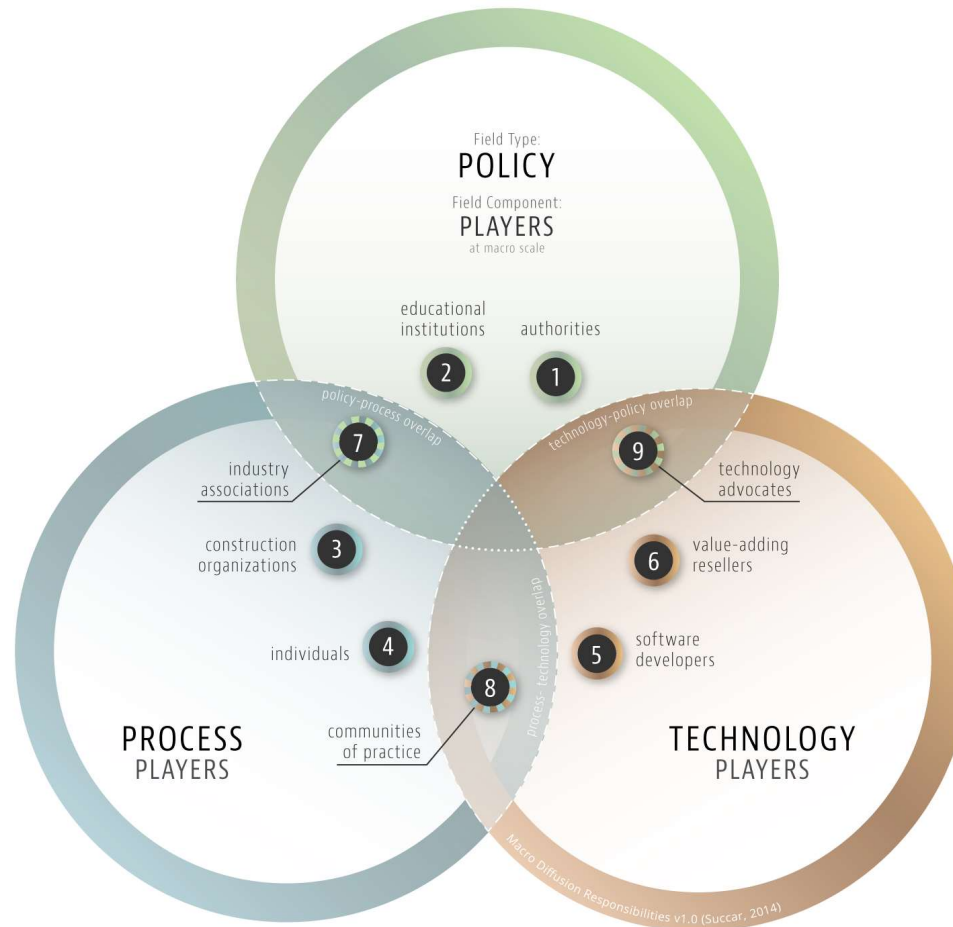


- Australia's BIM culture is "bottom up and middle out"





Courtesy of M Kassem, B Succar



Courtesy of M Kassem, B Succar

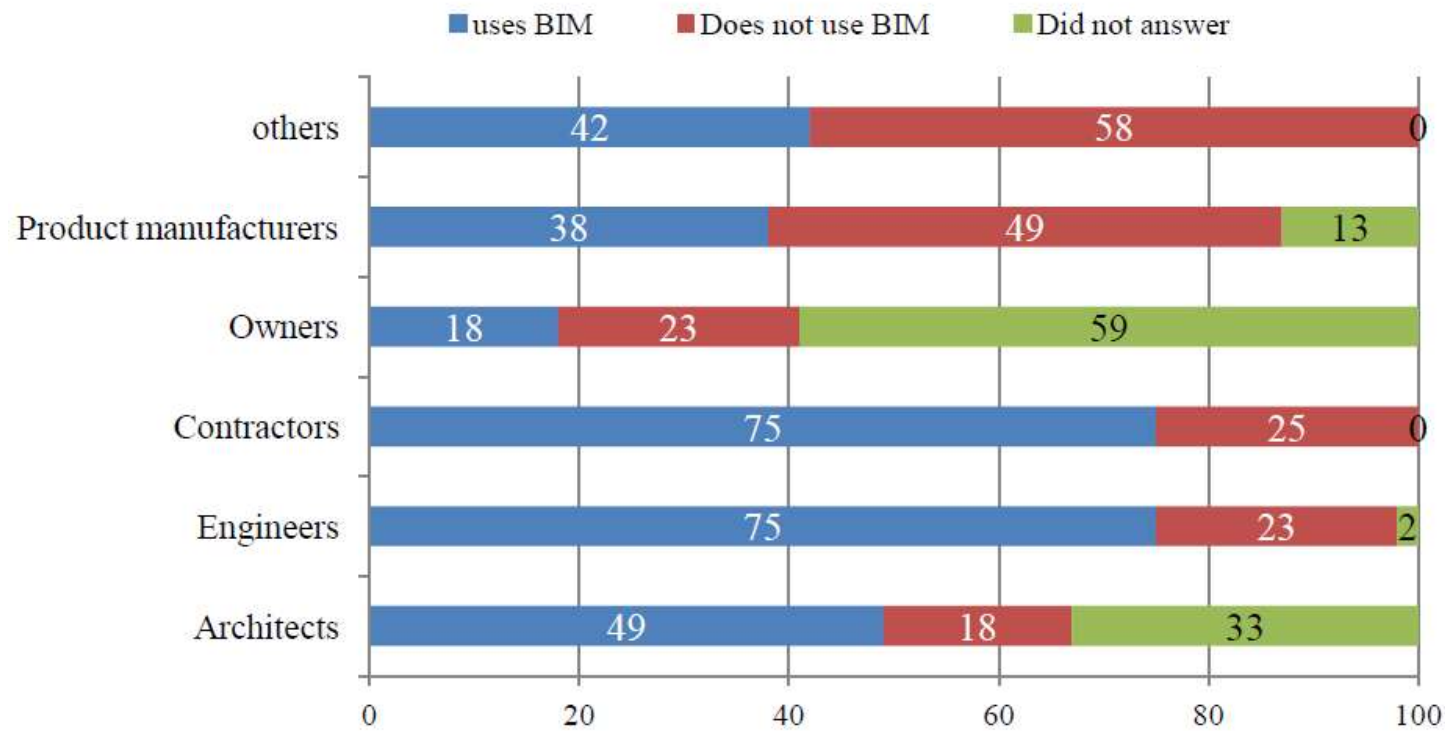


Figure 2: BIM adoption rates in Australia (adapted from BEIIC, 2010)

Revit Technology Conference

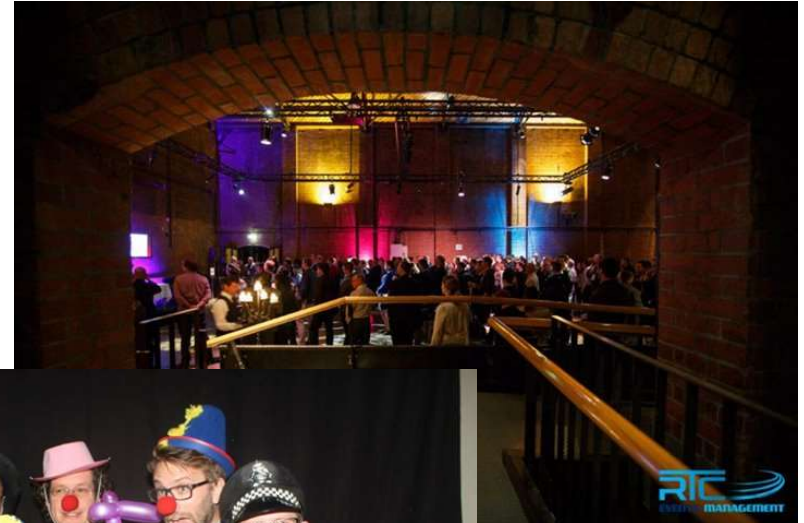




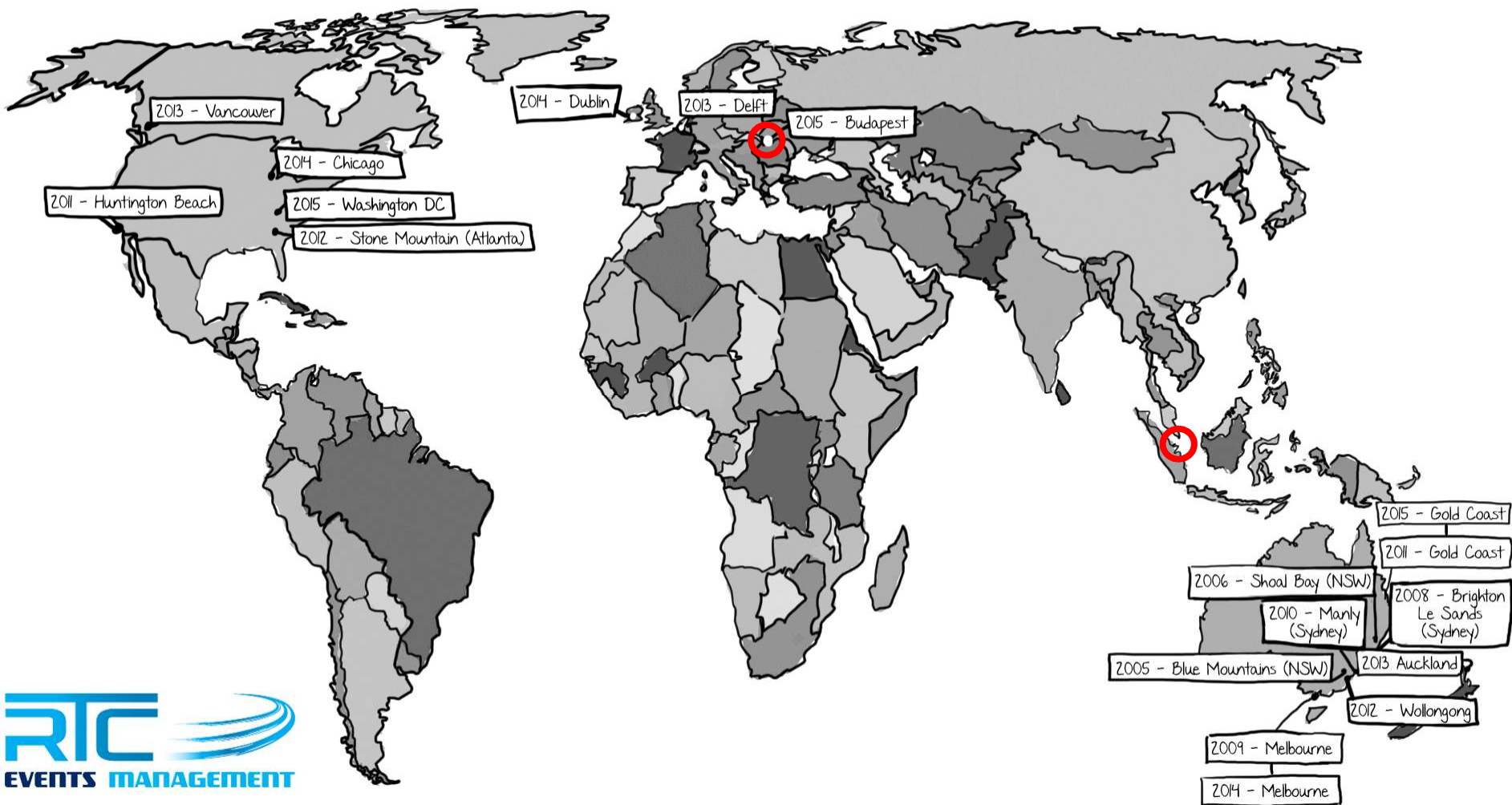
The Crowd....

The Classes....





The Community....



Stats

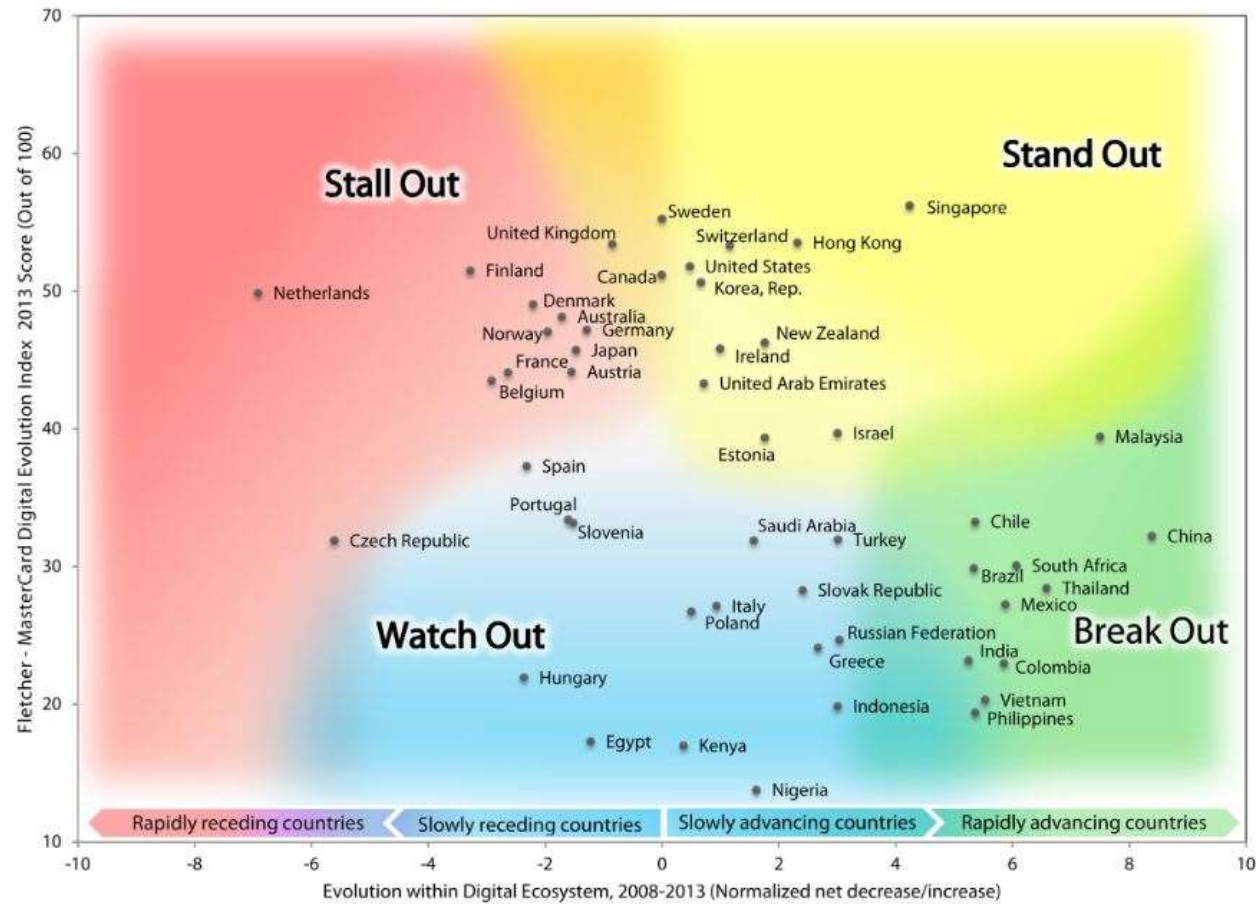
- 30 International events
- 49 countries
- 340+ sessions in 2015
- 2,000 delegates
- Next event
 - Europe!
 - Budapest, October 29-31





FIGURE 1: TRAJECTORY CHART

The 50 countries in the Index as they align with the four Trajectory Zones



Email: wesley.benn@rtcevents.com

Twitter: @wesleybenn

WeChat: doohicky

WhatsApp: Wesley Benn

LinkedIn: <https://au.linkedin.com/in/wesleybenn>



VIT
RT
NO
Y CONFERENCE



Life of an Architect.com

"Good ideas come
from everywhere.

It's more important
to recognize a
good idea than to
author it."

Jeanne Gang