

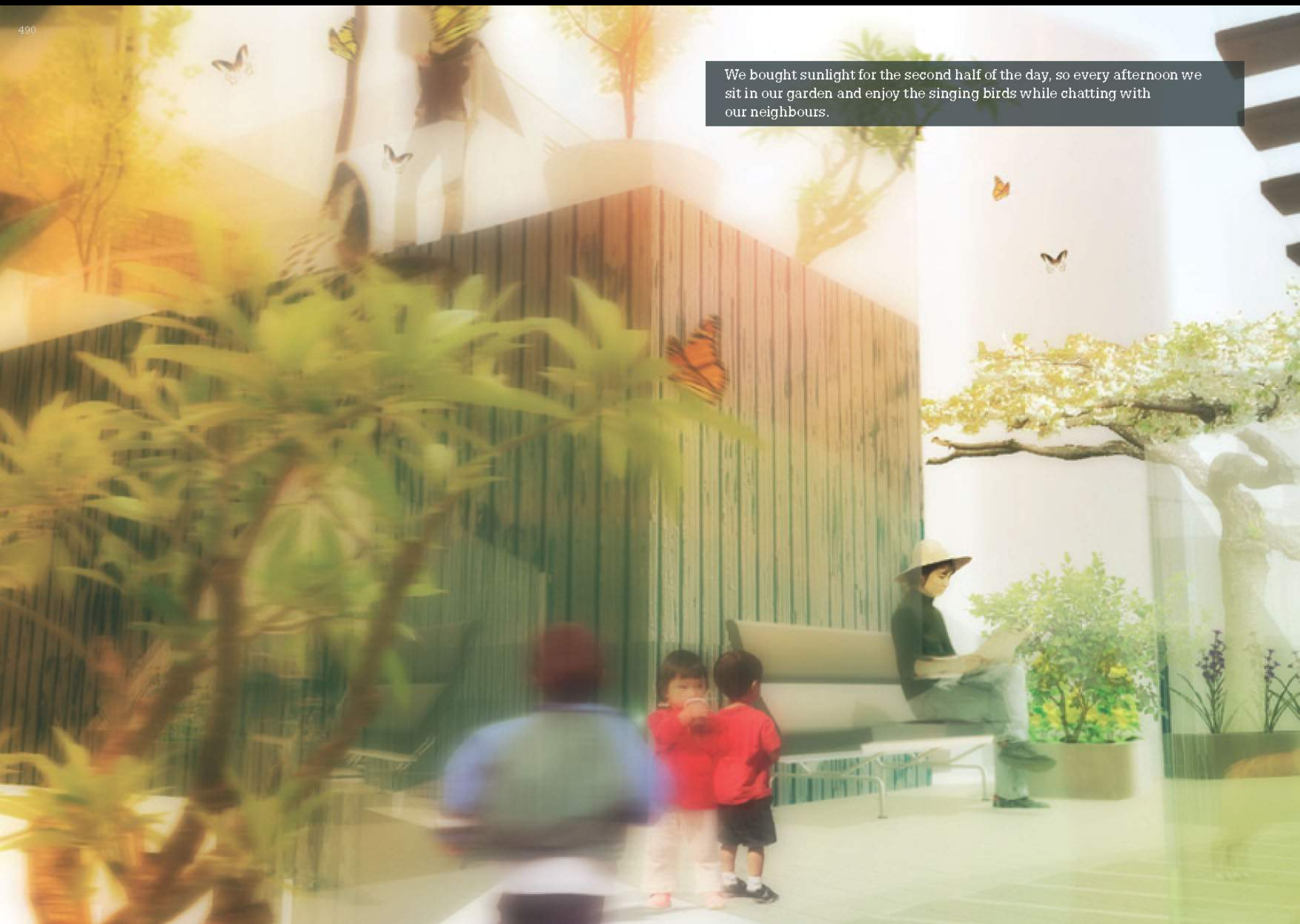
It was the first time in years that we were asked what we wanted, and had the freedom to decide what was important to us while staying within our budget. So yes, of course we ordered our dream house! Would you like to take a walk around?



We sat in front of our computer to explore our desires and needs, and we couldn't believe the amount of possibilities that were offered. Every element could be our own personal decision.



We bought sunlight for the second half of the day, so every afternoon we sit in our garden and enjoy the singing birds while chatting with our neighbours.



Every week a new house is built in our Vertical Village, and suddenly a new neighbour becomes part of our community. So do new shops, facilities and gardens. It's exciting to be part of an ever-evolving development, and it's beautiful to see everyone's wishes come true and the diversity this creates.





Bastide Niel

Bordeaux, FR

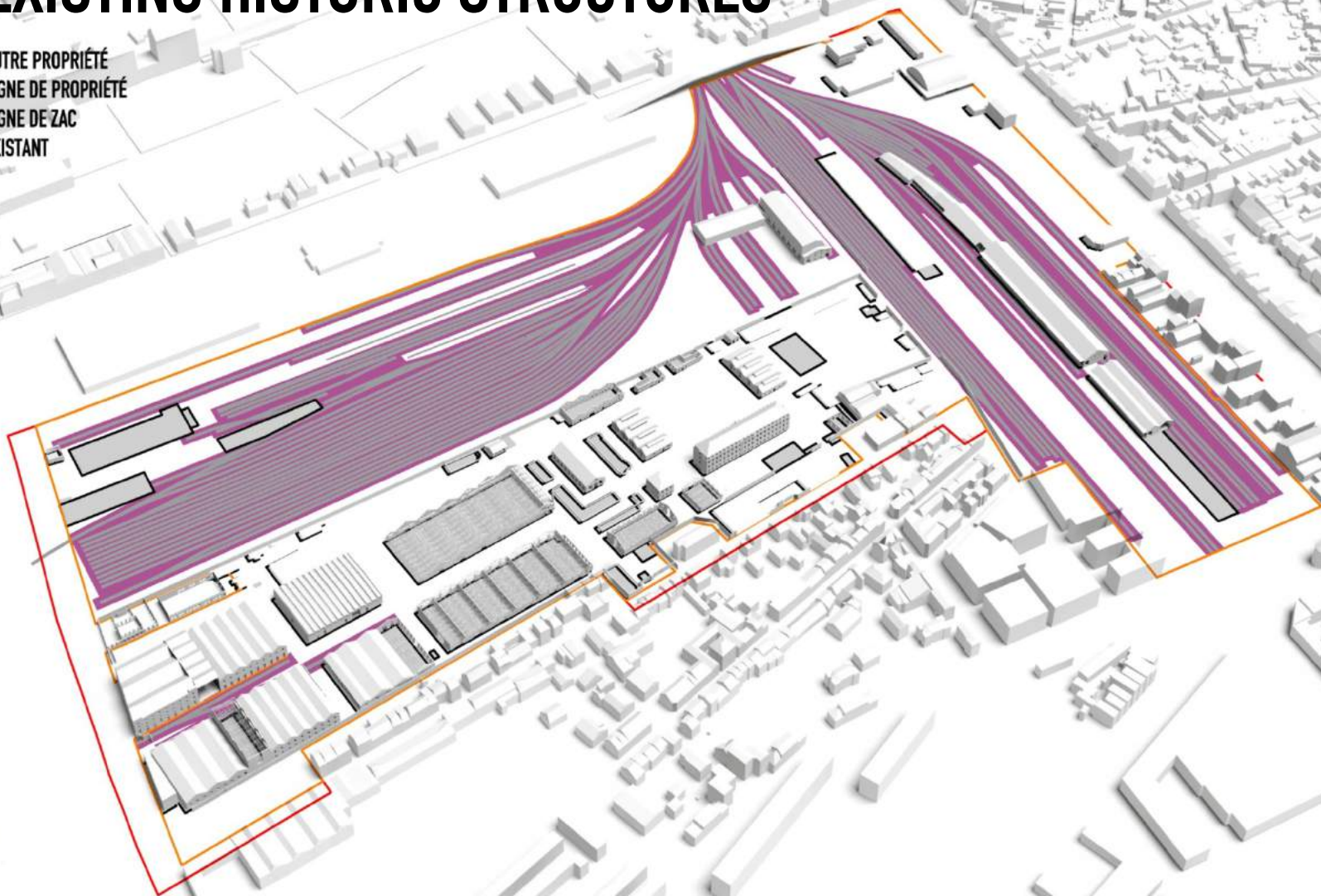
2010–

parameters:

day light, sunlight

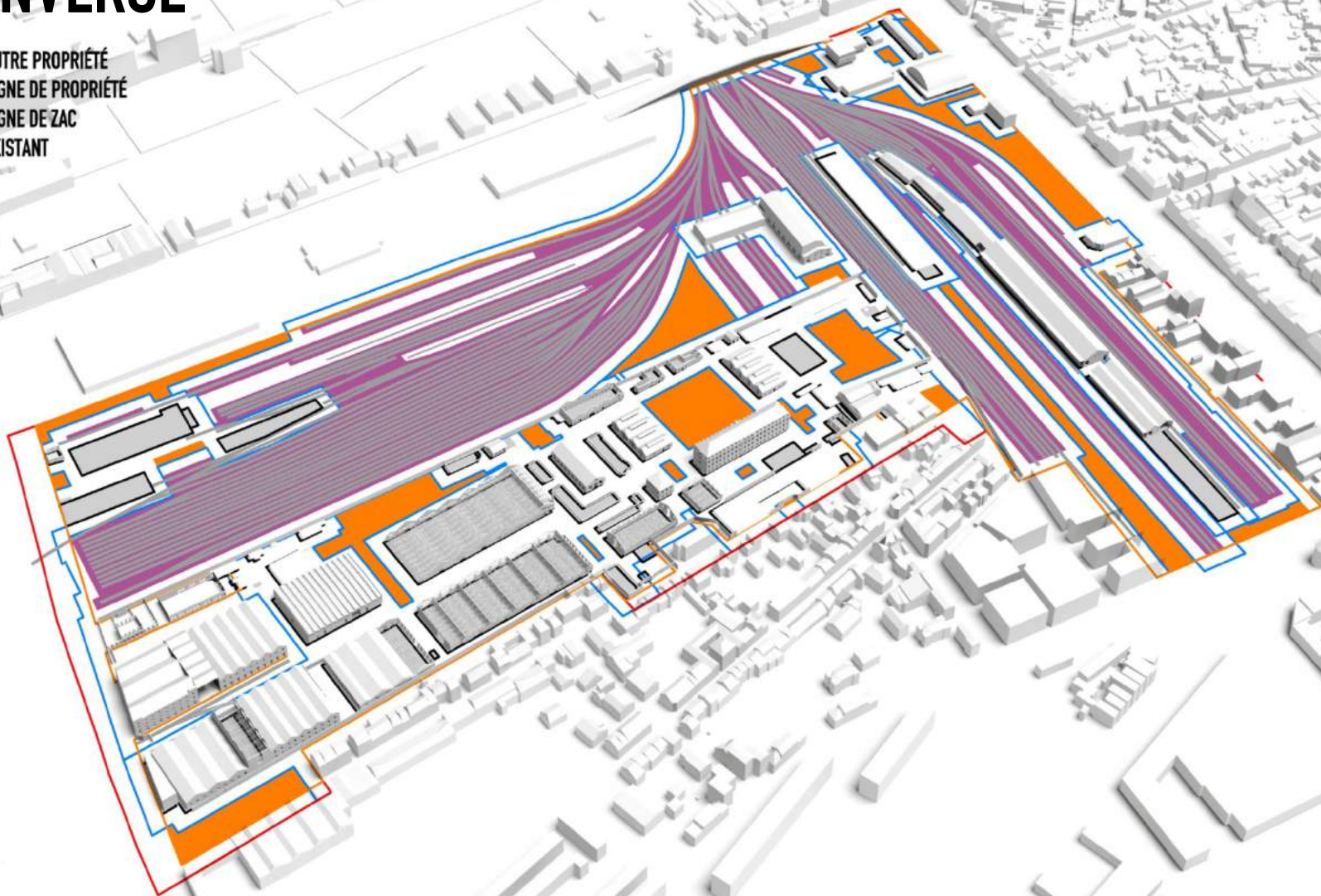
EXISTING HISTORIC STRUCTURES

- AUTRE PROPRIÉTÉ
- LIGNE DE PROPRIÉTÉ
- LIGNE DE ZAC
- EXISTANT



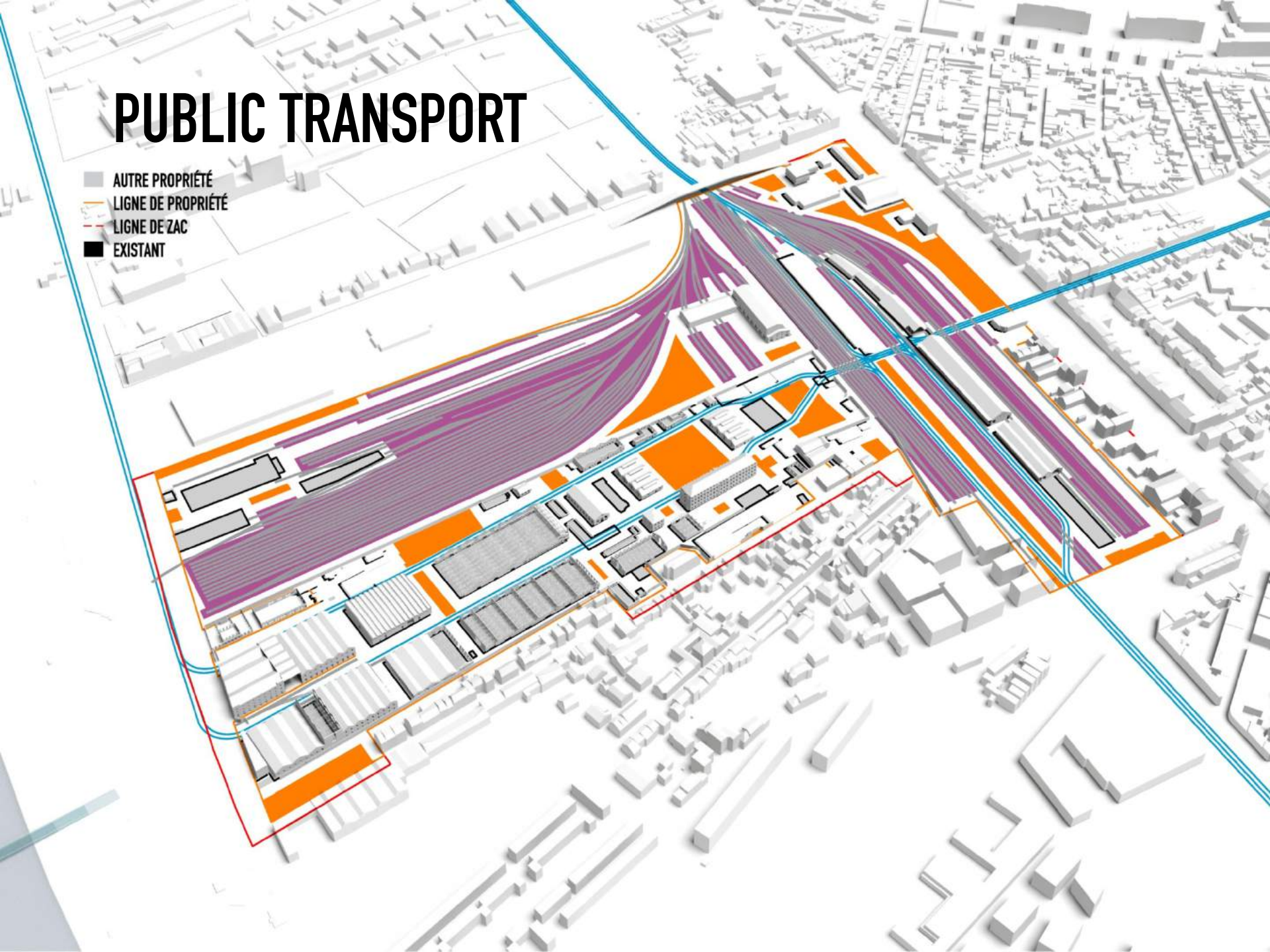
INVERSE

- AUTRE PROPRIÉTÉ
- LIGNE DE PROPRIÉTÉ
- LIGNE DE ZAC
- EXISTANT

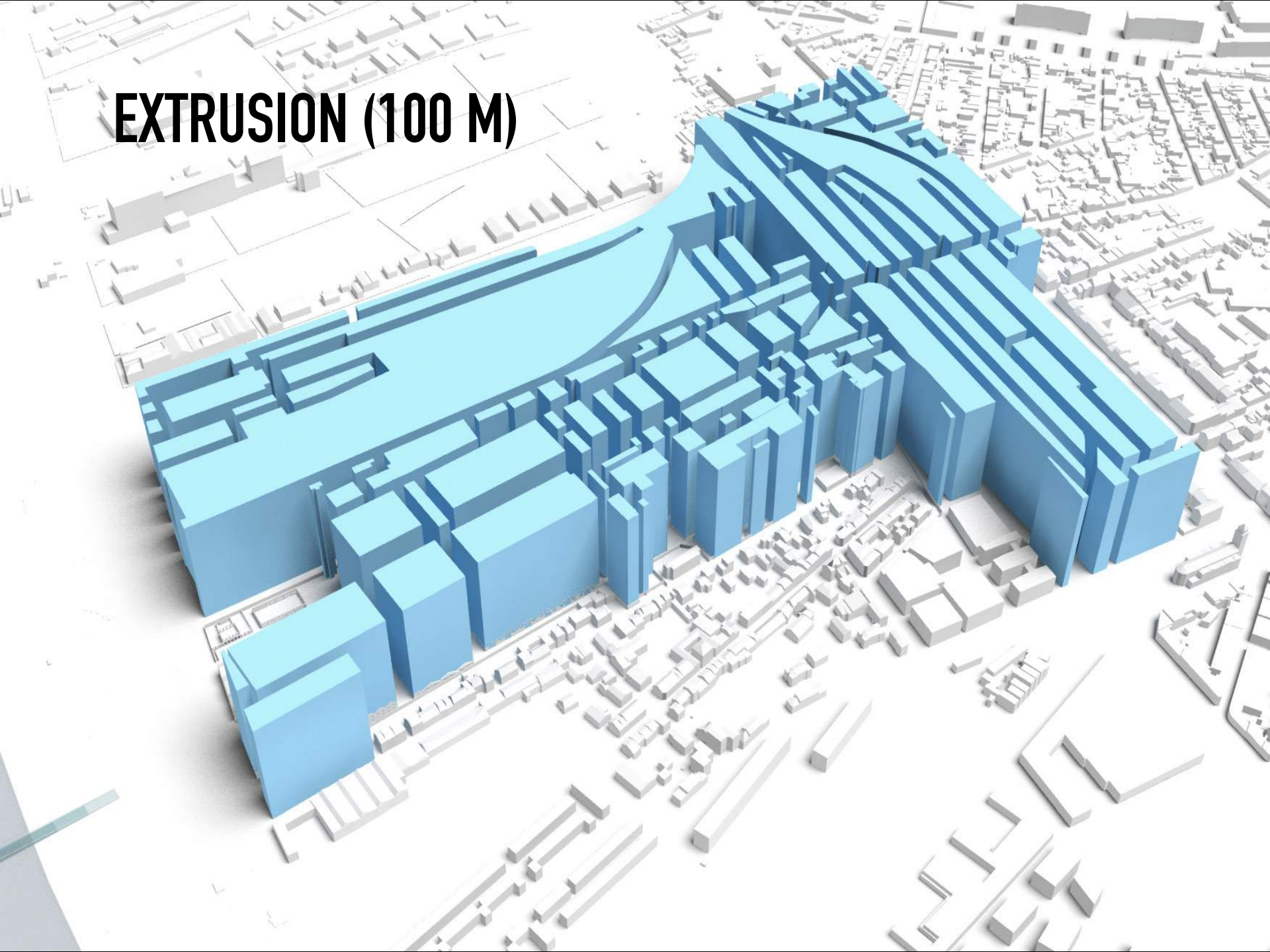


PUBLIC TRANSPORT

- AUTRE PROPRIÉTÉ
- LIGNE DE PROPRIÉTÉ
- LIGNE DE ZAC
- EXISTANT

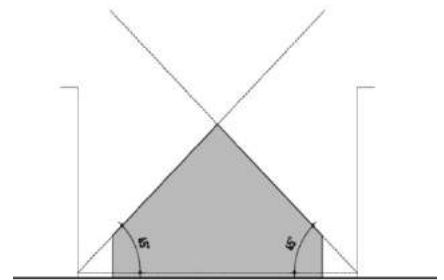


EXTRUSION (100 M)



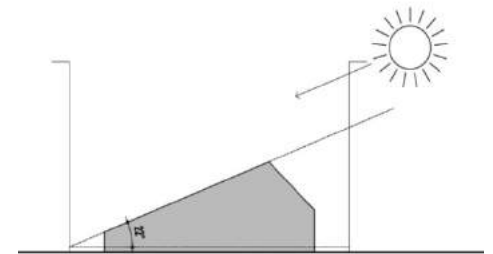
DAYLIGHT REQUIREMENTS

45 DEGREES

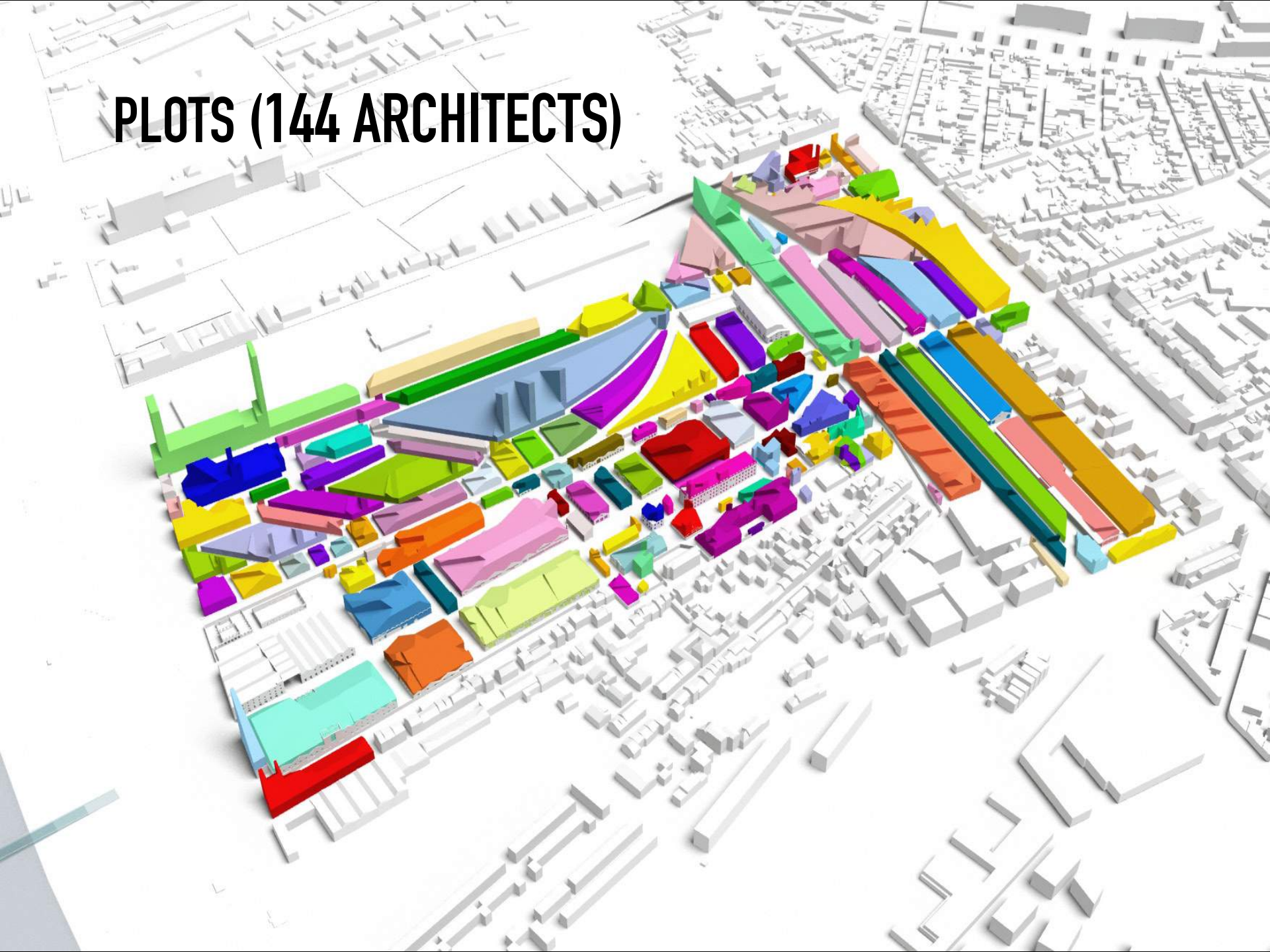


SUNLIGHT REQUIREMENTS

SECTION 22 DEGREES TO THE SOUTH

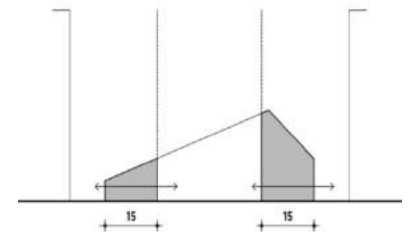


PLOTS (144 ARCHITECTS)



NATURAL VENTILATION REQUIREMENTS

DEPTH: 15M (BALCONY AND GALLERY INCLUDED)



BIM as collaborative model

- process of negotiation
- real time collaboration
- confronting the desires of different parties
- failure costs are significantly reduced

MVRDV office

DIRECTORS





FLEXIBLE WORKING GROUPS



MODEL OPTIONS





MVRDV CHINA

INTERNATIONAL PROJECTS



An iceberg floating in a blue ocean under a blue sky. The tip of the iceberg is above the water, while the much larger base is submerged. The submerged part contains various names of organizations and institutions.

MVRDV

UNIBAL

ING Real Estate

VANTONE

Local Architects

Dutch Ministry

VROM

t?f

TUD

Rotterdam

Amsterdam

Schiphol

NS ProRail

NY

NAi

Berlage Institute

Dutch DFA

Berlin University

ETH Zurich

French Ministry of Culture

Arcadis

ABT

Serpentine Gallery

Boymans Van Beuningen

MIT

ARUP

VPRO

BBC

HAPPOLD

JUT

William McDonough

droog

West 8

TOPOTEK

Richard Hutten

Jurgen Bey

AVL

THONIK

MVRDV

Mr. Stefan de Koning
Mrs. Inger Kammeraat







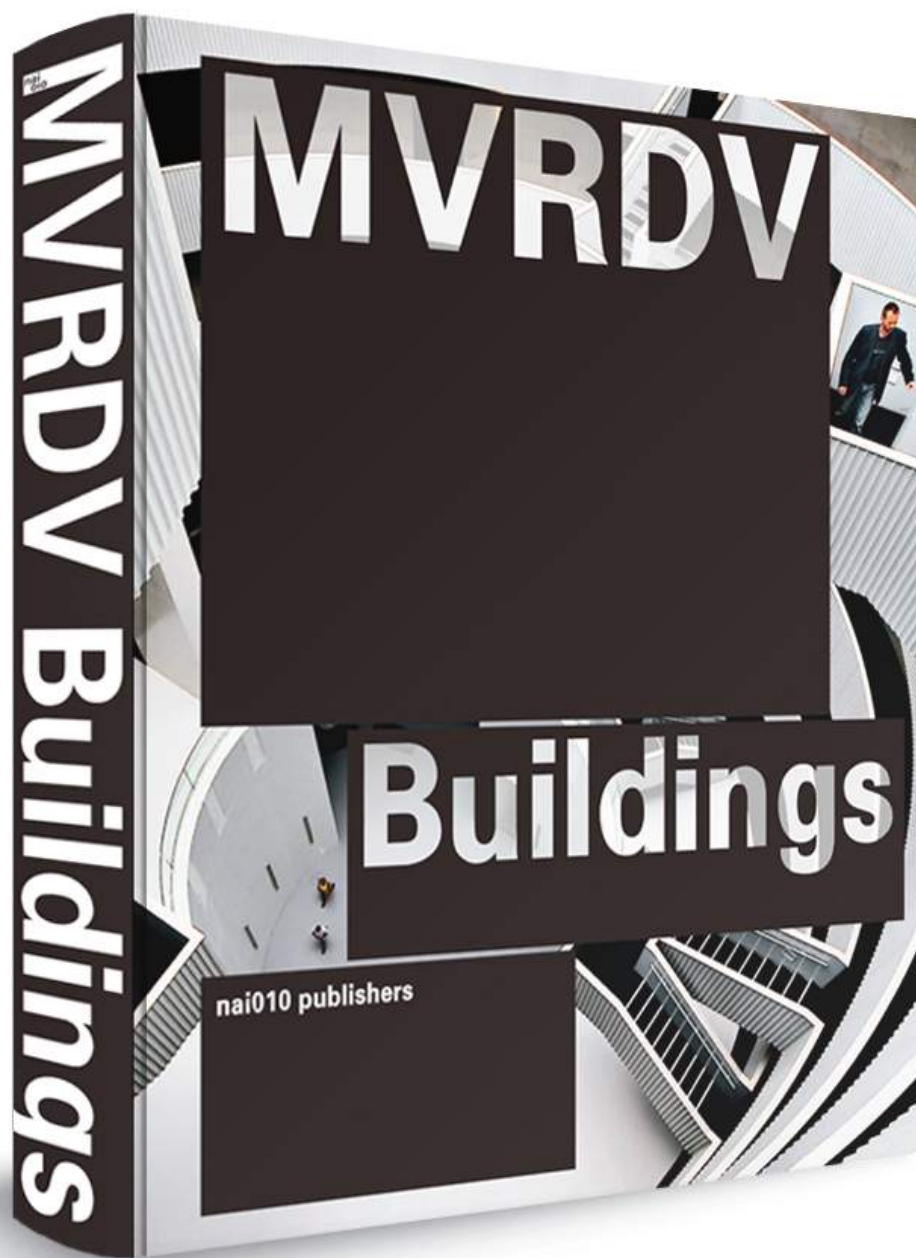


MVRDV buildings

2014

parameters:

users, social media





30.000

Thank you so much!
Now win a MVRDV book!

- 8243 PRESS RELEASE DATABASE
- 32024 FOLLOWERS ON TWITTER
- 5000 FRIENDS ON FACEBOOK (MAX)
- 33034 FANS ON FACEBOOK
- 190 GROUP ON LINKEDIN
- 917 SUBSCRIBERS YOUTUBE
- 7253 FRIENDS ON WEIBO
- 690 FRIENDS ON RENREN

**Direct contact with 87,351 interested
subscribers**



The iconic profile of the Didden Village has become a landmark in the neighbourhood. Didden has a theory that air traffic controllers use the house to guide helicopters travelling from the airport to the city centre. 'The blue is such a strong colour in this brown neighbourhood when seen from the air,' he says. It's just as useful to people on the ground. You can easily find the building without an address. If you approach the extension on foot as you walk down the leafy streets of Middelland, the extension suddenly appears, a striking if surreal presence in an island of homogeneity in a sea of heterogeneity.

The problem, though, is that the house as a landmark is visible to all – including the architectural tourist, whose curiosity is often satisfied at the expense of the family's need for privacy. 'When we opened the house to virtually everyone, our family almost became famous. There is a picture of my son in his bedroom, looking kind of sad and alone, surrounded by his teddy bears – like a rich kid with more toys than love. Apparently a crowd pleaser during lectures,' says Van de Kamp. Jan, who now studies architecture, puts it more plainly: 'I hated the tourists in my bedroom.'

Even with the doorbell ringing, the interior of the Didden Village feels remarkably private. A quiet, leafy outdoor patio separates the three gabled houses: a larger one for the parents' bedroom and two smaller, attached ones for their sons. Enclosed on all four sides by a parapet, this space is open to the sky, yet sheltered from its neighbours.



To stand on a rooftop in Rotterdam without being able to see the city – except in specific instances where the parapet has been cut to frame a particular view – is a strange experience that suggests that the extension has more in common with the suburban home than the luxury penthouse. It turns its back on the views of the city and instead distils the experience of the home into its purest forms: privacy, open space, and fresh air.

Each little house is connected to the kitchen and living room on the third floor via its own staircase. Hanging from a secondary metal structure that rests upon the existing roof, they spiral down until they end one tread short of the floor. Changes to the existing house, which is listed, have been kept to a minimum of three holes, one for each staircase. Theoretically, the entire rooftop extension, made of lightweight wood, can be easily removed without damage to the original structure.

Not everyone can afford the investment, time and effort that the Didden Village required. There are still plenty of kinks that need to be figured out. But beyond its parapet walls is a sea of untapped opportunity – one which neighbours are already starting to take advantage of with activities as simple as furnishing. One neighbour has even installed a garden shed on his roof.

'Using your roof is really smart. Everyone should try to do it in their own way. If you like roses, install a conservatory; if you like books, create a library; if you want







Olympiaquarter

Almere, NL

2008–2012

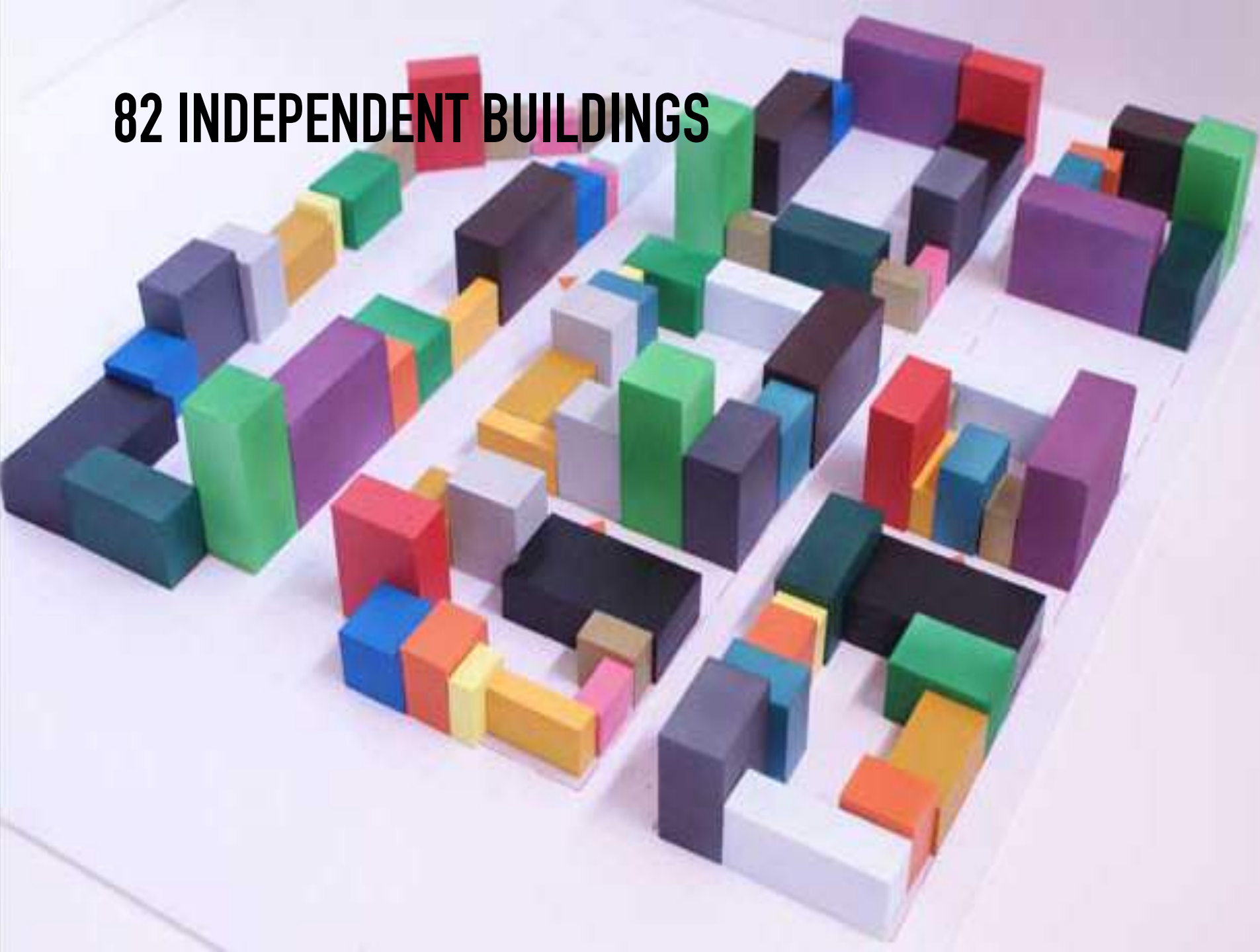
parameters:

costs, construction, diversity

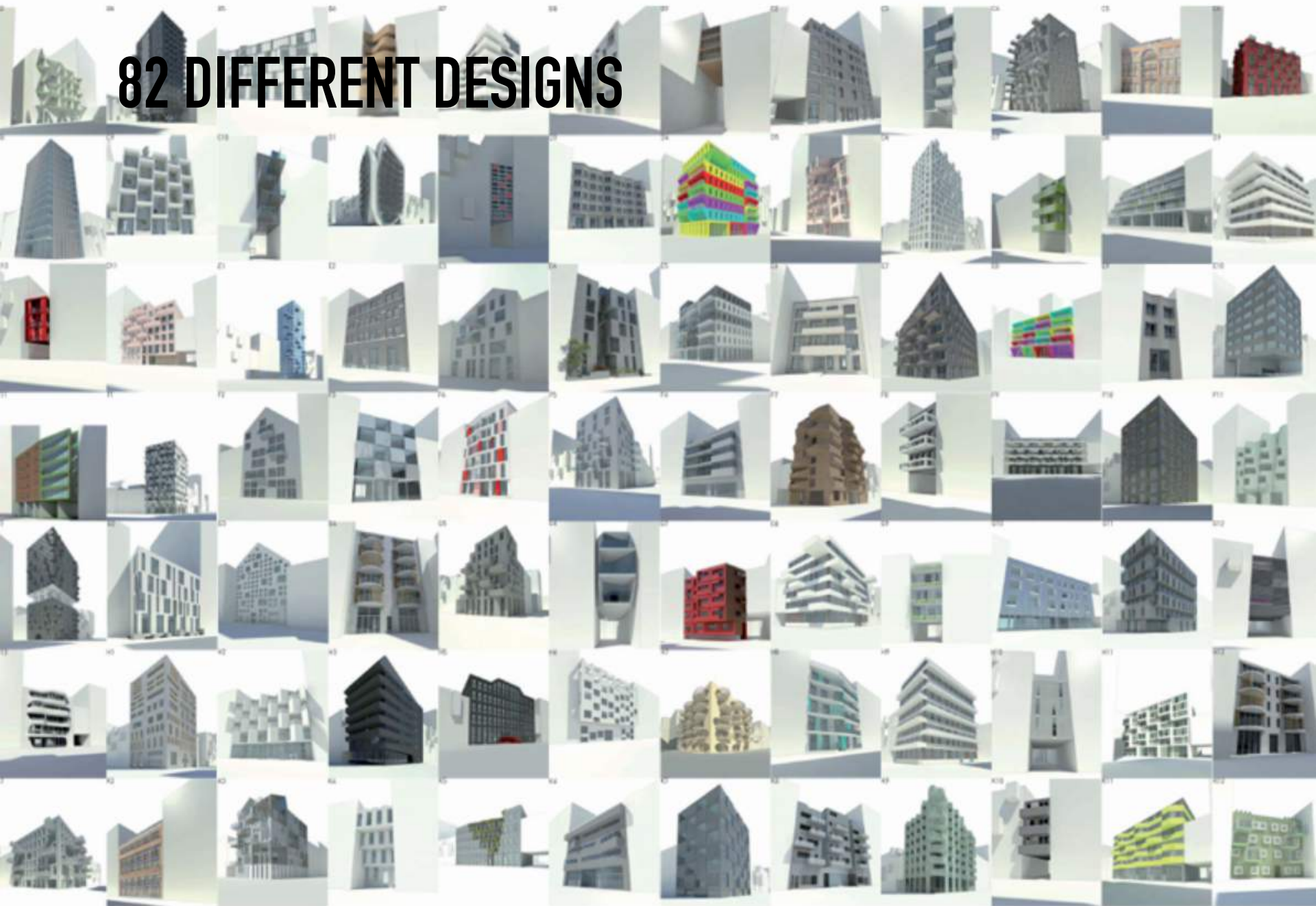
CHAIN OF BEADS



82 INDEPENDENT BUILDINGS



82 DIFFERENT DESIGNS



MVRDV+ 25 INTERNATIONAL ARCHITECTS



Invited offices:

2012 Architects, Netherlands

Atelier Bow Wow, Japan

Baumschlager & Eberle, Austria

BKK-3 Architektur, Austria

Breitman et Breitman, France

Bruno Albert Architecte & Associés, Belgium

Charles Vandenhove Architecture, Belgium

Cobe, Denmark

DierendonckBlancke Architects, Belgium

Édouard François, France

Guallart Architects, Spain

Herreros, Spain

JDS Architects, Denmark, Belgium

Jürgen Mayer H., Germany

Krier Kohl, Luxemburg

LOT-EK, United States

Monadnock, Netherlands

Onix, Netherlands

Powerhouse Company, Netherlands

Sadar Vuga Arhitekti, Slovenia

Studio Gang, United States

Urban Think Tank, Venezuela

Van Bergen Kolpa Architecten, Netherlands

Yasutaka Yoshimura Architects, Japan











OLYMPIALAAN



DWARSSTRAAT



Public Art Depot Rotterdam,

NL

2013–

parameters:

impact footprint streetlevel, costs (facade/floor ratio)















Ku-Be

Frederiksberg, Denmark

2009-2016

parameters:

program elements



- Wellness
- Zen
- Theatre
- Pulse / Fitness
- Study / Exhibition
- Health / Food
- Administration





● OKU.PE

I would like to experience contemporary art





